

FY2014
ANNUAL
REPORT



Direct Relief®

FISCAL YEAR 2014 BOARD OF DIRECTORS

July 1, 2013 - June 30, 2014

CHAIR John Romo

VICE CHAIR Rita Moya

SECRETARY Lawrence Dam

ASST. SECRETARY Mari Mitchel

TREASURER J. Michael Giles

Patricia Aoyama

Kendall Bishop

Sharon Bradford

Thomas J. Cusack

Patty DeDominic

Dante Di Loreto

Patrick Enthoven

Hon. Paul Flynn

Gregg L. Foster

Dorothy H. Gardner

Ernest J. Getto

David Lee Gibbs, Ph.D.

Linda J. Gluck

Bert Green, M.D.

Angel Iscovich, M.D.

Joanna Kerns

Nancy Koppelman

Jeanne Newman

Julie Rabinovitz

Rick Roney

Barbara Rubin

Mark Schwartz

Mary-Louise Scully, M.D.

George Short

Gary Tobey

Steven A. Weintraub

CHAIR EMERITI

Richard Godfrey

Stanley C. Hatch

Dorothy F. Largay, Ph.D.

Denis Sanan

Nancy B. Schlosser

INTERNATIONAL ADVISORY BOARD

E. Carmack Holmes, MD

S. Roger Horchow

Donald E. Petersen

Richard Schall

John W. Sweetland

PRESIDENT & CEO

Thomas Tighe

HONORARY BOARD

PRESIDENT EMERITUS

Sylvia Karczag

DIRECTOR EMERITUS

Dorothy Adams



27 S. La Patera Lane, Santa Barbara, CA 93117

T: 805-964-4767 | TOLL-FREE: 800-676-1638 | F: 805-681-4838

DirectRelief.org

TABLE OF CONTENTS

02

Message from the Board Chair and
the President & CEO

04

The Year in Review

12

Expanding Access & Quality Healthcare

14

Introduction & Certification of
Financial Statements

18

Combined Statement of Activities

20

Notes to the Financials

26

Investors

42

Guiding Principles



Our mission is to improve the health and lives of people affected by poverty or emergency situations by mobilizing and providing essential medical resources needed for their care.





MESSAGE FROM
**THE CHAIR AND
PRESIDENT & CEO**

WILLIAM VAZQUEZ, PREVIOUS PAGE PHOTOS: ANDREW FLETCHER, WILLIAM VAZQUEZ, JODIE WILLARD

We are pleased to share Direct Relief's annual report on Fiscal Year 2014. We also are pleased to report that during this period—July 1, 2013, through June 30, 2014—Direct Relief responded to more requests for assistance, fulfilled its humanitarian mission more expansively, and provided **more assistance to more people in need than ever before in the organization's 66-year history.**

We recognize, with the deepest of gratitude, that Direct Relief was able to help more people and to do so efficiently because of the expanded participation and support of businesses, organizations, and individuals whose names are listed in this report. Participation comes in many sizes and forms, but each reflects a decision that was not required by the person who made it, which adds a special meaning to Direct Relief's activities.

By the financial indicators on which Direct Relief and all nonprofits are in part measured, and included in annual reports such as this, the FY2014 results were very positive. Overall, the organization **provided over \$500 million in assistance for the first time ever in a 12-month period**, which represented an increase of more than 40 percent from the previous year. Importantly, Direct Relief's multi-year investments in technology and systems, which have been critical to **how** the organization provides assistance, also enabled the expanded efforts to be done with greater efficiency, transparency, and precision than ever before.

However, **why** Direct Relief exists—the reason it was founded in 1948 and its simple humanitarian purpose—is unchanged and central to both the day-to-day and long-term activities.

Health remains fundamental for every person to realize his or her potential and enjoy the wonders of life. Preventive care and access to care when sickness or injury occurs is essential to health. Each day, millions of people in the United States and around the world confront severe health risks and high barriers to needed care and medications because they are without the means to pay. And each year, disasters and other emergencies create urgent health risks for millions of people, particularly those of limited means who face severe challenges as a matter of course and were most vulnerable the day before an emergency struck.

Direct Relief's simple, humanitarian mission is to provide life-saving medical aid to people in urgent need. And the organization's approach is to work with those in the communities, helping them improve and expand their services by providing resources to which they otherwise have no access. This approach is necessary for the long-term goals of improving health in the hardest-pressed communities, informing emergency response efforts, and making the most at-risk communities more resilient.

Direct Relief has many different partners, and one simple cause. As a **privately-funded charitable** organization, Direct Relief is continually inspired by the involvement of thousands of individuals, companies, foundations, and organizations whose involvement is essential in ways big and small. Direct Relief's tradition of adapting new technologies and modern business

practices for humanitarian purposes continued over the course of the past year.

During FY2014, Direct Relief received two honors that reflect the unique span of partners with which Direct Relief is privileged to work. **CECP** (formerly known as the Committee to Encourage Corporate Philanthropy), the organization founded by the late actor Paul Newman, honored Direct Relief with its Directors' Award as the leading example of how a nonprofit organization can work with businesses on a social good. Weeks later, Direct Relief received from the **National Association of Community Health Centers**—the organization that represents the network of nonprofit facilities in the U.S. that serve 23 million people (1 in 15 persons in the country)—its highest award for the unwavering support that Direct Relief has provided to health centers nationwide.

Both awards are important to share with you and all of Direct Relief's supporters, since it was your participation that earned them. Moreover, they reflect how Direct Relief is trying to bring together the critically important perspectives—from the highest level of both public-service, public-health focused health nonprofits as well as from the highest level of business. Together, these perspectives, and those of individuals who also participate, can create much more significant advances toward the common goal of improved health and opportunity for the least fortunate among us, which is Direct Relief's longstanding vision.

Please accept our deepest thanks, again, for your involvement in Direct Relief's important humanitarian work that helps people facing severe challenges live, be healthier, and realize the inherent wonders of life.



A handwritten signature in black ink, appearing to read 'John Romo'.

JOHN ROMO
Chair



A handwritten signature in black ink, appearing to read 'Thomas Tighe'.

THOMAS TIGHE
President & CEO

THE YEAR IN REVIEW

BUSINESS PARTNERSHIPS THAT MATTER



Since 1948, Direct Relief has improved the health and lives of people affected by poverty or emergency situations by mobilizing and providing essential medical resources needed for their care—both within the United States and throughout the world.

How Direct Relief was able to provide more help to more people than ever before this fiscal year was due in large part to partnerships with some of the world's leading companies—taking their highly efficient and effective tools and using them to help solve some of the most vexing global health issues facing humanity today.



WILLIAM VAZQUEZ

A newborn baby in the delivery tent of the Bumi Wadah birth camp in Dulag, Philippines. Learn more about the Direct Relief-supported camp on page 7.

HERE ARE 3 PARTNERSHIPS >>

in which Direct Relief is engaged to transform health for people in need in all 50 U.S. states and around the world.

FY2014 CORPORATE PARTNERS

Some of the world's leading corporations and foremost institutions partner with Direct Relief, bringing their financial resources and tools to bear on health issues affecting people in need.

3M	Covidien	The Information Blanket	Palantir Technologies
Abbott & Abbott Fund	Crosstex International	Integra LifeSciences Sales LLC	Pfizer, Inc.
AbbVie & AbbVie Foundation	CVS Corporation	Janssen Pharmaceuticals	PR Newswire Association, LLC
Actavis Pharma, Inc.	Dentsu McGarry Bowen LLC	Jin Ramen Corporation	Prestige Brands
Aera Energy LLC	Dermalogica Foundation	Johnson & Johnson Companies	Recordati Rare Diseases, Inc.
Akorn Pharmaceuticals	Dodge and Cox	Karl Storz, Inc.	REM Eyewear
Alcon Laboratories, Inc.	Drip Drop, Inc.	Kimberly-Clark	Roche Diagnostics
Allergan, Inc.	eBay Foundation	Life Uniform Company	SAM Medical Products
Amgen Foundation, Inc.	Eileen Fisher, Inc.	LifeScan, Inc.	sanofi pasteur
Amneal Pharmaceuticals	Eli Lilly and Company	Luma Pictures	Sanofi US Foundation for North America
Ansell Healthcare	Equipped2Heal	McKesson Medical-Surgical	Sappo Hill Soapworks
AstraZeneca	Ethicon, Inc.	Meal Kit Supply America LLC	Sempermed USA
Balanced, Inc.	FedEx	Meda Pharmaceuticals	Shire
Basic Medical	Genentech, Inc.	The Medtronic Foundation	Smile Train
Baxter International Inc.	Genzyme Corporation	Medvantx Incorporated	Soap Guy
BD	GF Health Products, Inc.	Mentor Worldwide LLC	Sunrise Pharmaceutical, Inc.
Beverly Tree Farm LLC	Golden Touch Imports Inc.	Merck & Co., Inc.	Takeda Pharmaceuticals USA, Inc.
Bluebonnet Nutrition Corporation	Google	Microflex	Teva Pharmaceuticals
Boehringer Ingelheim	Grifols, Inc.	Microsoft Corporation	Trigen Laboratories
Brickyard VFX	GSK	Midmark Corporation	Tulipe
Bristol-Myers Squibb	GSMS Incorporated	Mylan Laboratories Inc.	UG Healthcare
C. R. Bard	Handpiece Trading / Maramar Dental	N. B. Kenney Company Inc.	Urban Outfitters, Inc.
Calmoseptine, Inc.	Hanover Environmental Services Inc	Nephron Pharmaceuticals	Venoco, Inc.
Cardinal Health	Hardware Distributors Ltd.	Neutrogena Corporation	Ventura Global Health Project
Cera Products, Inc.	Henry Schein, Inc.	News America Incorporated	Virtus Pharmaceuticals
Chattem Inc.	Hospira, Inc.	Novartis Corporation	Walt Disney Company
Chevron Corporation	Humble Bundle	Omron Healthcare, Inc.	Wells Fargo
Cisco Systems, Inc.	IBM Corporation	Ortho Clinical Diagnostics, Inc.	Yahoo!
Clif Bar & Company	Illinois Tool Works Foundation	Orthopaedic Resources, Inc.	Zinpro Corporation
The Clorox Company		The P&G Fund	Zynga Game Network
Cost Plus World Market			

1. THE FORCE MULTIPLIER

In May of 2014, CECP—a coalition founded by the late Paul Newman of 150 CEOs united in the belief that societal improvement is an essential measure of business performance—presented Direct Relief its 2014 Directors' Award for working with FedEx to help tens of millions of people in need in the U.S. and around the world access life-saving medicines and supplies.

Since 1993, FedEx has been a force multiplier in Direct Relief's humanitarian efforts and has brought amazing scale, efficiency, and precision to helping people in poverty or affected by disasters get the critical help they need.

In the U.S. alone, more than 10 million people have received over \$400 million in needed medications—all delivered by FedEx.

Corporate participation in disaster relief efforts has been increasingly important to the business bottom line, as employees and customers look to companies—not just governments or aid organizations—to provide critical relief assistance. **In November 2013, FedEx provided Direct Relief an emergency airlift of medical supplies to care for 250,000 people affected by Typhoon Haiyan in the Philippines.**

This is a powerful example of the essential, lifesaving activity that simply could not happen without this type of collaboration. Although a strong case for a profitable business does not exist in every situation where a compelling human case does, businesses insight, tools, and skills are equally applicable to address many of the inherent challenges involved, which are essentially the same.

"CECP's awards recognize businesses, nonprofits, and individuals that demonstrate strong connections between community solutions and business strategy," stated Daryl Brewster, CEO of CECP. "This year's winners used their resources, know-how, and passion to address tough societal issues and exhibit in a forthright way the win-win nature of business investing in society."



FY2014 Year in Review

PHILIPPINES TYPHOON RELIEF

Direct Relief provided 200 tons, \$13.2 million in medicines and medical material to 100 hospitals, clinics, and medical teams caring for people affected by Typhoon Haiyan.

In Dulag, Leyte Island, where 80% of homes were destroyed, Direct Relief provided the resources to help the Bumi Wadah birth camp keep up with the 100 births it would oversee each month.



FY2014 Year in Review

STRENGTHENING THE U.S. HEALTHCARE SAFETY NET FOR 23 MILLION PATIENTS

One in 13 people receive care at nonprofit clinics and community health centers across the U.S. Direct Relief supports 1,200 clinics and health centers nationwide, is the only nonprofit licensed to distribute prescription medicines in all 50 states, and is the only nonprofit that is VAWD accredited.

In Fiscal Year 2014, Direct Relief provided \$68.3 million in free medications and supplies to these front-line points of care for people in need.

2. BUILDING COMMUNITY RESILIENCE

BY FOCUSING ON MOTHERS
AND CHILDREN

While Direct Relief's humanitarian efforts work to improve the quality of and access to health care for all people who need help in the U.S. and throughout the world, Direct Relief places particular emphasis on strengthening health services for women and children in poor areas where they face serious risks from preventable conditions and often lack care for treatable illness or injuries. Direct Relief focuses its maternal and child health efforts on high-impact investments to help ensure the health of mothers and their children during the critical periods of pregnancy and delivery.

Direct Relief has worked closely with Abbott and Abbott Fund for more than a decade, and together they share a commitment to improving the health of people around the world by building sustainable health care systems, particularly those that care for women and children. In Afghanistan, that's meant supporting efforts to bolster the work of the Afghan Institute of Learning (AIL).

Abbott Fund and Direct Relief have been able to help AIL develop programs that support the health and well-being of Afghan women by providing them with access to nutrition, health education, and quality medical services. With this support, the health of women and children in the areas that AIL works have greatly improved. AIL employs Afghan women who are aware of and sensitive to the challenges faced by their peers, and they have developed successful programs and activities to address these barriers and engage women in the community.



PROTECTING PREGNANT WOMEN

It is staggering that a woman dies every two minutes from complications during pregnancy or childbirth—more than 287,000 women each year worldwide, the vast majority in developing countries. That's why Direct Relief's work protects women through the critical periods of pregnancy and childbirth.

This support includes ensuring more trained midwives are properly equipped, expanding emergency obstetric care in high-need areas, and supporting life-restoring surgeries for women who suffer the debilitating effects of obstetric fistula—a birth-related injury that affects deeply impoverished women almost exclusively.

Direct Relief ensures that midwives are equipped with the right tools to provide life-saving antenatal, delivery, and post-partum care.

In Sierra Leone, for example, all graduates from the School of Midwifery Makeni are equipped with a Direct Relief Midwife Kit that contains everything a midwife needs to deliver 50 babies safely.

3 WAYS DIRECT RELIEF HELPS MOMS THRIVE:

- 1 — EQUIPPING MIDWIVES
- 2 — EXPANDING EMERGENCY OBSTETRIC CARE
- 3 — INCREASING LIFE-RESTORING SURGERIES FOR WOMEN WITH FISTULA

3. WHERE MATTERS

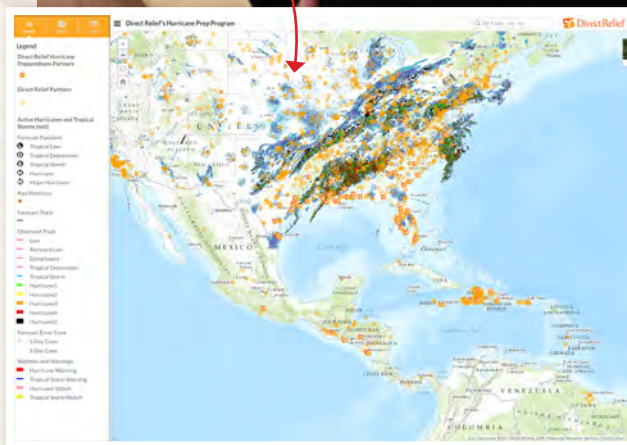
In FY2014, Direct Relief was honored with the President's Award from technology company Esri for outstanding use of mapping software known as geographic information systems (GIS). GIS has become a powerful tool for Direct Relief and—through partnerships with technology companies like Esri and Palantir—is helping to shape the future of humanitarian aid.

Direct Relief is pioneering the use of data analysis and visualization tools to inform, mobilize, target, and deliver humanitarian medical assistance to areas and people in need. By using a range of technologies from Esri, Palantir, SAP and others to assist its disaster preparedness and relief work, Direct Relief ensures that medical aid is targeted and delivered efficiently and effectively. Through the integration of many different data sets on a single platform, Direct Relief can assess historical patterns, understand risks, and identify communities that are most socially vulnerable to a particular threat.

To better inform Direct Relief's extensive **Hurricane Preparedness Program**, Direct Relief conducted research on areas most vulnerable to hurricanes, determining the ten U.S. counties most at-risk, visualized on Esri's platform. The conclusions are based on historical storm data coupled with social vulnerability indices to help drive decisions around which communities Direct Relief should pre-position critical medicines at the start of hurricane season. This research was featured in USA Today.

New tools like the Esri Story Map will allow Direct Relief to craft location-specific narratives about the work healthcare providers are able to do with Direct Relief's support. And enhanced analytic tools—from optimized hotspotting to spatial regression analysis—will help Direct Relief test hypotheses about the causes and consequences of humanitarian aid.

Thanks to partnerships with companies like Esri and Palantir, the future of GIS at Direct Relief is one of cartography as a process of continuous, localized and globally-aware thought, communication, and social action.



>> [HURRICANE PREPAREDNESS PROGRAM DirectRelief.org/maps](http://DirectRelief.org/maps)



WILLIAM VAZQUEZ



THOMAS TIGHT

FY2014 Year in Review

EXECUTING THE LARGEST HURRICANE PREPAREDNESS PROGRAM EVER

Disasters strike more frequently and more intensely every year. Direct Relief's work requires not only immediate response to disasters as they occur, but also the provision of assistance to communities to build their capacity to be prepared for an emergency. Since 2007, Direct Relief has managed the largest hurricane pre-positioning program in the United States and throughout the Caribbean and Latin America.

Direct Relief pre-positions medical packs at partner clinics and hospitals before a hurricane strikes, to ensure that delivery delays are eliminated and medical professionals are equipped with the essential materials to treat injured patients on-site. Aimed at equipping nonprofit clinics and hospitals located in disadvantaged communities, each year Direct Relief supports 50 healthcare facilities within hurricane-prone regions of the U.S. and 10 facilities throughout Latin America and the Caribbean. These preparedness packs include medicines and supplies to treat a variety of conditions, from trauma injuries to people suffering from chronic health conditions.

In the U.S., Direct Relief has deployed more than 280 packs to communities in nine states since the inception of the program in 2007. Each pack contains lifesaving medicines and supplies to treat 100 patients for three to five days, enough time for providers to weather the storm and for back-up assistance to arrive. The packs are designed to be mobile and easily transported should a medical facility have to set up temporary operations.

In Latin America and the Caribbean, more than 90 modules have been delivered since 2007. Each module contains medicines and supplies to treat up to 5,000 people for one month. In 2014, 15 Hurricane Preparedness Modules were positioned in the Dominican Republic, El Salvador, Haiti, Honduras, Jamaica, and Nicaragua.

EXPANDING ACCESS + QUALITY HEALTH CARE

FOR MILLIONS OF PEOPLE AROUND THE WORLD

FISCAL YEAR 2014

USA

- \$ > 68,316,129
- Rx > 13,874,964 DDD*
- ⚖ > 1,253,225 lbs.
- 📦 > 100,268 cu. ft.

CARIBBEAN

- \$ > 45,573,353
- Rx > 86,917,377 DDD*
- ⚖ > 565,533 lbs.
- 📦 > 56,880 cu. ft.

LATIN AMERICA

- \$ > 80,995,985
- Rx > 123,952,935 DDD*
- ⚖ > 795,890 lbs.
- 📦 > 92,842 cu. ft.

**FY14
ASSISTANCE
TOTALS**

\$503.2 million in medical aid amounting to
300.8 million defined daily doses*
7,333 deliveries weighing 1,984 tons and
taking up 398,374 cubic feet in volume

KEY

- \$** > TOTAL WHOLESALE VALUE
- Rx** > DEFINED DAILY DOSE >>>>>>>>
- ⚖** > TOTAL WEIGHT (IN POUNDS)
- 📦** > TOTAL VOLUME (IN CUBIC FEET)

*** THE DEFINED DAILY DOSE (DDD)** is a measure of drug utilization developed by the World Health Organization (WHO) and maintained by the WHO Collaborating Center for Drug Statistics Methodology at the University of Norway in Oslo. The DDD value — essentially a daily treatment measure — indicates “the assumed average maintenance dose per day for a drug used for its main indication in adults.” It is intended as an international average, for the sake of standardization and comparison between national contexts, not as a guide to actual prescriptions. For more information: www.whocc.no/ddd.

EUROPE & MIDDLE EAST

- \$** > 11,665,527
- Rx** > 5,969,086 DDD*
- ⚖** > 101,250 lbs.
- 📦** > 11,421 cu. ft.

EAST & SOUTHEAST ASIA

- \$** > 37,863,997
- Rx** > 30,422,815 DDD*
- ⚖** > 726,251 lbs.
- 📦** > 82,826 cu. ft.

AFRICA

- \$** > 247,215,868
- Rx** > 36,683,713 DDD*
- ⚖** > 309,318 lbs.
- 📦** > 30,866 cu. ft.

SOUTH ASIA

- \$** > 11,494,497
- Rx** > 2,954,372 DDD*
- ⚖** > 161,482 lbs.
- 📦** > 18,593 cu. ft.

INTRODUCTION AND CERTIFICATION OF FINANCIAL STATEMENTS

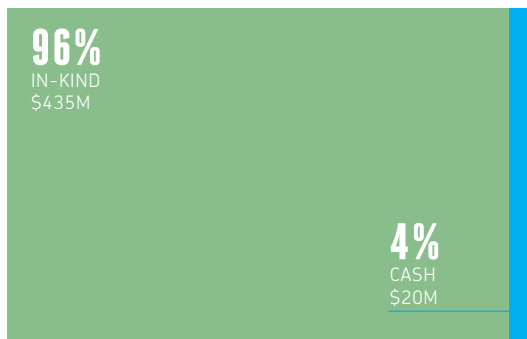
Direct Relief had a **very strong** Fiscal Year 2014 in all areas of activities and finances. We received **\$455 million in public support** and provided a record **\$506 million in total assistance around the world (including cash grants)**. Direct Relief's financial position and balance sheet continue to be strong thanks to **steadfast support** from generous donors and the Board of Directors. >>

In October 2014, Typhoon Haiyan battered the Philippines, affecting more than 11.3 million people. Direct Relief provided 200 tons, \$13.2 million in medicines and medical materials to hospitals, medical facilities, and medical teams. Here, a Reach Out Worldwide team member cares for a patient with help from an Emergency Medical Pack provided by Direct Relief.

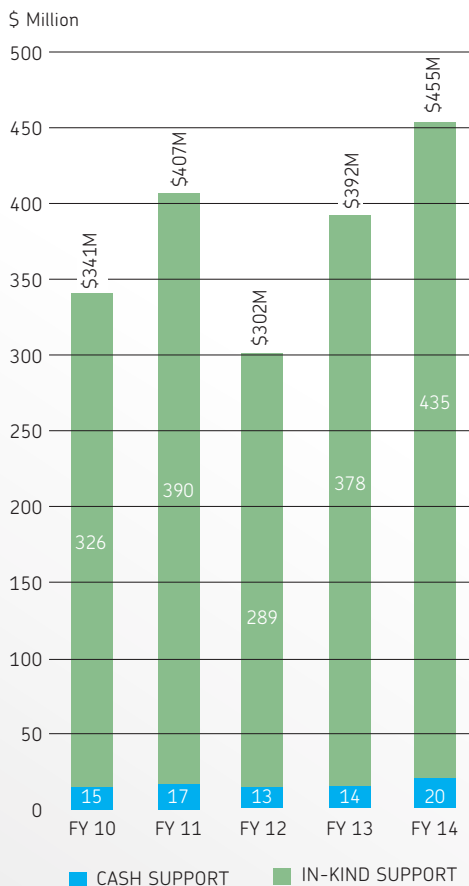
CASH AND IN-KIND CONTRIBUTIONS

To fulfill its mission and program objectives, Direct Relief has long sought partnerships with businesses and organizations with particular expertise that is needed and can be leveraged for humanitarian purposes. This approach has led to more than 150+ healthcare manufacturers and other corporations, in sectors ranging from technology to transportation, providing in-kind contributions in the form of needed goods (primarily medical products) and services that would otherwise have to be purchased. Direct Relief also solicits and receives cash contributions, which are used to cover internal costs and for goods and services to advance the organization's mission and that cannot be obtained through in-kind donations.

The strategic pursuit of in-kind resources enables Direct Relief to provide far more humanitarian assistance than would be possible in a model that relied entirely upon raising cash and

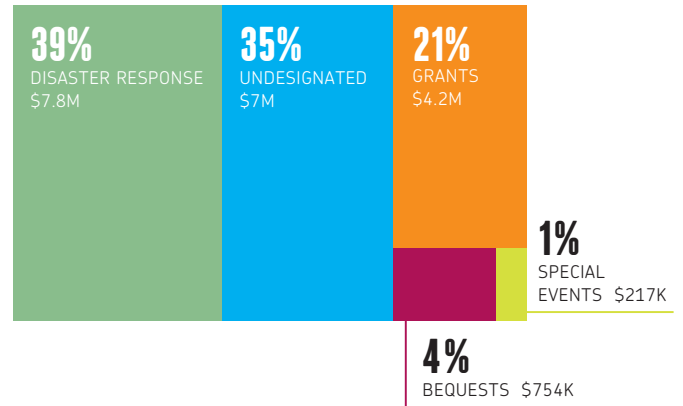


FY 2014 CONTRIBUTED SUPPORT: \$455M



then converting the cash into goods and services. It makes little economic sense to incur the expense involved in raising funds to then purchase something that a business may be willing and able to provide directly and more efficiently as its charitable contribution.

FY 2014 SOURCES OF CASH SUPPORT & REVENUES: \$20.1M



Direct Relief's financial statements must account for both cash and in-kind contributions that are entrusted to the organization to fulfill its humanitarian mission. In Fiscal Year 2014, the vast majority of our total public support of \$455 million was received in the form of in-kind medical products and certain other donated services (such as transportation services from FedEx, online advertising from Google, donated volunteer services from the GSK PULSE Volunteer Partner Program in which senior professionals volunteer to be seconded to work at Direct Relief at no cost to Direct Relief). The previous pages explain where and why the in-kind medical products were provided by the organization.

We recognize that merging cash and in-kind contributions in accordance with Generally Accepted Accounting Principles (GAAP) can be confusing to non-accountants. The notes following the financial statements are to assist you in understanding how our program model is financed and works, to explain the state of our organization's financial health, and to inform you about how we spent the money generously donated to Direct Relief in 2014 by individuals, businesses, organizations, and foundations.

Direct Relief's activities are planned and executed on an operating (or cash) budget that is approved by the Board of Directors prior to the onset of the fiscal year. The cash budget is not directly affected by the value of in-kind medical product contributions. Cash support—as distinct from the value of contributed products—is used to pay for the logistics, warehousing, transportation, program oversight, program staff salaries, purchasing of essential medical products, acquisition of donated medical products, and all other program expenses.

When taking an annual snapshot at the end of a fiscal year, several factors can distort a realistic picture of our (or any nonprofit organization's) financial health and activities. Since the purpose of this report is to inform you, we think it is important to call your attention to some of these factors.

TIMING OF REVENUE RECOGNITION AND EXPENSES

First is the timing of donations being received and the expenditure of those donations, whether in the form of cash or in-kind medical products. Donations—including those received to conduct specific activities—are recorded as revenue when they are received or promised, even if the activities are to be conducted in a future year. The in-kind product donations are also recorded in inventory upon receipt. Direct Relief's policy is to distribute products at the earliest practicable date, consistent with sound programmatic principles. While the distribution often occurs in the same fiscal year of receipt, it may occur in the following fiscal year. An expense is recorded and inventory is reduced when the products are shipped to our partners.

In the fiscal year ended June 30, 2013, Direct Relief received slightly more value in product donations than we shipped out to our partner network. When that fiscal year ended, the product inventories that had not been "spent" were reported as an increase in net assets or a "surplus." This increase in net assets was carried forward and "spent" during the course of Fiscal Year 2014. This resulted in a decrease in net assets (or net operating "loss") in Fiscal Year 2014 and was primarily driven by a decrease in inventory as Direct Relief shipped more in humanitarian aid than it received in product donations for this fiscal year.

For the fiscal year ended June 30, 2014, the organization reported a change in net assets of (\$91.3 million). As described above, this was driven by a lower value of donated product received, \$430 million, than value of product distributed, \$503 million.

MANAGEMENT AND GENERAL EXPENSES

Direct Relief has adopted a strict policy to ensure that 100 percent of all designated contributions (e.g. donations for the "typhoon Haiyan response") are used only on expenses related to supporting that program response. We have used similar policies for all of our disaster responses in the last few years, including the Indian Ocean tsunami, Hurricanes Sandy, Katrina, and Rita, and earthquakes in Japan, Haiti, Pakistan, Peru, China, and Chile.

We believe this is appropriate to honor precisely the clear intent of generous donors who responded to these exceptional tragedies and to preserve the maximum benefit for the survivors for whose benefit the funds were entrusted to Direct Relief.

VALUATION OF IN-KIND RESOURCES

Direct Relief is the only nonprofit organization in the United States that has received accreditation from the National Association of Boards of Pharmacy as a Verified-Accredited Wholesale Distributor (VAWD) licensed to distribute prescription medicines in all 50 U.S. states, and is among the largest-volume providers of medical donations to its partners worldwide. Direct Relief's programs involve a wide range of functions, several of which require specialized expertise and licensing. Among these functions are identifying key local

providers of health services in such areas; working to identify the unmet needs of people in the areas; mobilizing essential medicines, supplies, and equipment that are requested and appropriate for the circumstances; and managing the many details inherent in storing, transporting, and distributing such goods to the partner organizations in the most efficient manner possible.

When Direct Relief receives an in-kind donation, accounting standards require a "fair market value" to be assigned to the donation. Donations of medicines, medical equipment, and medical supplies have long been an integral part of Direct Relief's humanitarian assistance programs. In assigning a fair market value to the in-kind medical donations received, Direct Relief uses a careful, conservative approach that complies with the relevant accounting standards, and the spirit and purpose of disclosure, transparency, and accountability to the public.

Specifically, Direct Relief uses the following methodology in determining the fair market value of in-kind medical donations:

For U.S. Food and Drug Administration (FDA)-approved pharmaceuticals, branded and generic, the valuation basis is the "Wholesale Acquisition Cost" (WAC) as published in the Thomson Reuters RedBook®, an industry-recognized drug and pricing reference guide for pharmaceuticals in the United States.

WAC is the standard used by many U.S. states as the Federal Upper Limit pricing for drugs purchased under the Medicaid program. Alternative methods of valuing a drug donation would result in a higher valuation. For example, the commonly cited Average Wholesale Price (AWP), which also is published in the RedBook®, is approximately twenty percent higher than WAC for a particular product according to the RedBook®. Direct Relief determined that WAC is the more appropriate measure.

Because pricing differences exist for generic and branded products, it is important to note Direct Relief applies WAC value to each specific product's National Drug Code, which relates to the specific manufacturer and formulation of a drug. This distinction is significant because it reflects, for example, the lower price (and fair market value) of a generic product received through donation, compared to higher-priced branded product.

For non-FDA-approved pharmaceuticals, for example products manufactured for use in non-U.S. markets, the organization uses independent pricing guides to determine the fair market value of the particular manufacturer's specific formulation. As is the case with FDA-approved formulations, the value relates to the specific product from the specific manufacturer. The sources of such pricing information vary, but relevant information may include the price paid by wholesalers or other third-party buyers, a price negotiated by an organization (such as the Clinton Foundation) for a particular drug, or other such reasonable bases.

For medical supplies and equipment, the organization determines wholesale value by reviewing the pricing information on the specific item listed for sale in trade publications, through online pricing, and through its own procurement history when purchasing. Such valuations typically are substantially lower than published retail prices.

Different prices of similar products or services in different geo-

graphic areas can cause confusion. The specifics of Direct Relief's valuation methodology are noted here in recognition of the confusion that can arise with regard to the value of contributed goods and services.

One source of confusion stems from the significant pricing (and therefore valuation) differences that exist in different parts of the world for similar products. With regard to pharmaceutical products, significant differences exist between a branded drug and a generic equivalent formulation even within the same market, including the U.S. Because Direct Relief operates on a global scale, such differences must be considered and reflected in the accounting and reporting of contributions.

Of course, similar pricing and valuation differences also exist for other commodities and services beyond pharmaceuticals. In the U.S., for example, the commodity of water may be the easiest example, since the price that is paid for the same compound, H₂O, ranges from free in a public tap to several dollars for a "branded" equivalent bottled quantity in a hotel room. But similar pricing differences exist for services as well. The outsourcing and off-shoring phenomena reflect that even highly skilled services—surgery, computer programming, research conducted by Ph.D.s—are done at vastly different prices in different countries.

Direct Relief's internal processes, information systems, and public disclosures ensure that these distinctions are clearly documented and that the organization's financial reporting precisely and accurately reflects the fair market value of the specific items received through donation.

If a low-cost generic medication is received through donation, its value is properly recorded as that of the generic medication. If a more expensive branded product is received through donation, its value is similarly properly recorded as that of a branded product.

As noted above, Direct Relief has long sought the contribution of needed goods and services to use for humanitarian purposes because of the efficiencies and other benefits that result. The organization, and more importantly the people it serves, benefit from the lowest-cost, most efficient use of resources. So too do financial contributors, since their financial contributions are not being used to purchase goods or services that can be obtained directly through donations. Therefore, when it comes to accounting for, documenting, and reporting any contributions it is very important that we get it right.

A strong incentive exists to use higher valuation sources, such as retail prices, or use branded product values for generic donations. However, we believe that a conservative approach provides the most accurate, easy-to-understand basis and is best to instill public confidence in our financial reporting.

DIRECT RELIEF FOUNDATION AND THE BOARD-RESTRICTED INVESTMENT FUND

In 1998, Direct Relief's Board of Directors established a Board-Restricted Investment Fund ("BRIF") to help secure the organization's financial future and provide a reserve for future operations. The BRIF, established with assets valued at \$774 thousand, draws

resources from Board-designated unrestricted bequests and gifts, and returns on portfolio assets.

In October 2006, the Direct Relief Foundation was formed and incorporated in the State of California as a separate, wholly controlled, supporting organization of Direct Relief. Effective April 1, 2007, assets in the BRIF were transferred to the Foundation. The Foundation's investments are managed by SEI Private Trust Company, an investment firm under the direction of the Board's Finance Committee, which meets monthly and oversees investment policy and financial operations.

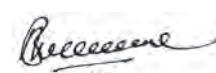
The Board has adopted investment and spending policies for the BRIF assets that attempt to provide a predictable stream of funding to Direct Relief while seeking to maintain the purchasing power of these assets. Under this policy, as approved by the Board of Directors, the BRIF assets are invested in a manner that is intended to produce results that provide a reasonable balance between the quest for growth and the need to protect principal. The Foundation expects its BRIF funds, over time, to provide an average rate of return of approximately seven percent annually. Actual returns in any given year may vary from this amount.

To satisfy its long-term rate-of-return objectives, the Foundation relies on a total return strategy in which investment returns are achieved through both capital appreciation (realized and unrealized) and current yield (interest and dividends). The organization targets a diversified asset allocation balanced between equity and fixed income investments to achieve its short-term spending needs as well as long-term objectives within prudent risk constraints.

The Foundation has a policy of appropriating for distribution each year an amount up to five percent of the assets of the BRIF. In some instances, the Board may decide to appropriate an amount greater than its stated policy if it is specifically deemed prudent to do so. For the fiscal year ended June 30, 2014, the Foundation Trustees approved a distribution of funds to pay for all fundraising, and approximately \$250 thousand of administration expenses (management and general expenses on the IRS Form 990). Upon a majority vote by the Board, the BRIF may also be utilized to meet other general operational costs, extraordinary capital expenses and advance emergency relief funding as determined by the President and CEO.



THOMAS TIGHE,
President & CEO



BHUPI SINGH
Executive VP, COO, & CFO

COMBINED STATEMENT OF ACTIVITIES

DIRECT RELIEF AND DIRECT RELIEF FOUNDATION

For the fiscal years ending June 30, 2014 and June 30, 2013

FY 2014

FY 2013

\$ IN THOUSANDS

	FY 2014		FY 2013	
PUBLIC SUPPORT & REVENUE				
PUBLIC SUPPORT				
Contributions of goods and services	\$ 434,798	94.7%	\$ 378,018	95.4%
Contributions of cash and securities—other	20,085	4.4%	14,381	3.6%
TOTAL PUBLIC SUPPORT	454,883	99%	391,964	99.1%
REVENUE				
Earnings from investments and other income	4,445	1.0%	3,718	0.9%
TOTAL PUBLIC SUPPORT AND REVENUE	459,328	100.0%	396,117	100.0%
EXPENSES				
PROGRAM SERVICES				
Value of medical donations shipped	503,187		341,856	
Inventory adjustments (expired pharmaceuticals, etc.)	25,197		30,571	
USA programs	5,409		5,709	
International programs	12,415		10,777	
TOTAL PROGRAM SERVICES	546,208	118.9%	388,913	98.2%
SUPPORTING SERVICES				
Fundraising (paid by the Board-Restricted Investment Fund)	1,704		1,529	
Management and General Expenses	2,691		2,297	
TOTAL SUPPORTING SERVICES	4,395	1.0%	3,826	1.0%
TOTAL EXPENSES	550,603	119.9%	392,739	99.1%
INCREASE (DECREASE) IN NET ASSETS	\$ (91,275)	-19.9%	\$ 3,378	0.9%

STATEMENT OF CASH FLOWS

DIRECT RELIEF AND DIRECT RELIEF FOUNDATION

For the fiscal years ending June 30, 2014 and June 30, 2013

JUNE 2014

JUNE 2013

\$ IN THOUSANDS

CASH FLOWS FROM OPERATING ACTIVITIES		
Cash collected from public support	\$ 19,649	\$ 13,824
Cash paid for goods and services	(18,481)	(16,440)
Interest paid	(38)	(59)
Dividend and interest income	478	559
Other income (expense)	(1)	-
NET CASH PROVIDED BY OPERATING ACTIVITIES	1,607	(2,116)
CASH FLOWS FROM INVESTING ACTIVITIES		
Purchase of investments	(12,957)	(20,076)
Proceeds from sale of investments	10,934	18,292
Purchase of capital assets	(363)	(151)
Unitrust distributions	(1)	13
NET CASH USED BY INVESTING ACTIVITIES	(2,387)	(6,922)
CASH FLOWS FROM FINANCING ACTIVITIES		
Payments on long term debt	(40)	(23)
Net change in capital lease obligation	(8)	(1)
NET CASH USED FOR FINANCING ACTIVITIES	(48)	(24)
NET INCREASE (DECREASE) IN CASH AND CASH EQUIVALENTS	(828)	(9,063)
CASH AND CASH EQUIVALENTS - BEGINNING OF YEAR	1,421	10,484
CASH AND CASH EQUIVALENTS - END OF YEAR	\$ 593	\$ 1,421

RECONCILIATION OF CHANGE IN NET ASSETS TO NET CASH PROVIDED BY OPERATING ACTIVITIES

Change in net assets	\$ (91,275)	\$ 3,378
ADJUSTMENTS TO RECONCILE CHANGE IN NET ASSETS TO NET CASH PROVIDED BY OPERATING ACTIVITIES:		
Depreciation	\$ 1,026	\$ 916
Change in inventory	96,186	(1,996)
Change in receivables	(435)	(557)
Change in prepaid expenses and other assets	(438)	464
Change in accounts payable and accrued expenses	599	309
Change in non-qualified deferred compensation accrual	(5)	44
Donated services pledged for next fiscal year	(245)	(225)
Donated software capitalized	-	(1,273)
Loss on exchange rate	-	(18)
Loss on disposal of fixed assets and other assets	162	-
Realized (gain)/loss on sale of investments	(1,256)	961
Unrealized (gain)/loss on investments	(2,712)	(4,119)
NET INCREASE IN CASH	\$ 1,607	\$ (2,116)

STATEMENT OF FINANCIAL POSITION

For the fiscal years ending June 30, 2014 and June 30, 2013

Direct Relief

Direct Relief
Foundation

FY 2014

FY 2013

\$ IN THOUSANDS

ASSETS**CURRENT ASSETS**

Cash and cash equivalents	\$ 581	\$ 12	\$ 593	\$ 1,422
Investments	2,713	33,989	36,702	30,711
Inventories	99,202	-	99,202	195,388
Other current assets	3,685	(1,591)	2,094	1,236
TOTAL CURRENT ASSETS	106,181	32,410	138,591	228,757

OTHER ASSETS

Property and equipment	5,983	-	5,983	6,807
Pledged bequests	-	470	470	83
Other assets	-	-	-	128
TOTAL OTHER ASSETS	5,983	470	6,453	7,018
TOTAL ASSETS	\$ 112,164	\$ 32,880	\$ 145,044	\$ 235,775

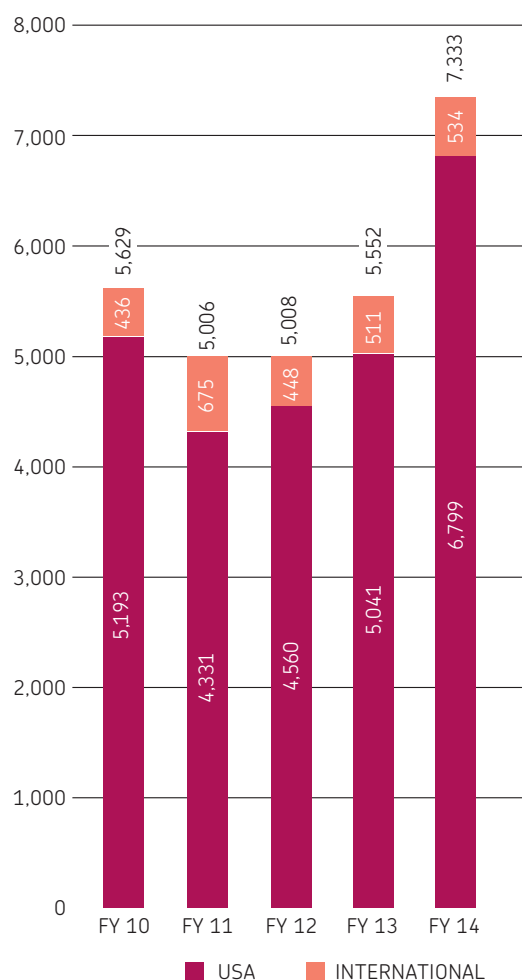
LIABILITIES AND NET ASSETS**CURRENT LIABILITIES**

Accounts payable	\$ 817	-	\$ 817	\$ 491
Other current liabilities	(426)	1,817	1,391	1,117
Long-term debt	1,336	-	1,336	1,377
Capital lease obligation	10	-	10	18
Deferred compensation	39	-	39	44
Distribution payable	15	-	15	16
TOTAL LIABILITIES	1,791	1,817	3,608	3,063

NET ASSETS**UNRESTRICTED NET ASSETS**

Board-Restricted Investment Fund (BRIF)	-	33,977	33,977	30,542
Undesignated	103,254	(3,634)	99,620	196,761
TOTAL UNRESTRICTED NET ASSETS	103,254	30,343	133,587	227,303
Temporarily restricted assets	7,119	695	7,814	5,384
Permanently restricted assets	-	25	25	25
TOTAL NET ASSETS	110,373	31,063	141,436	232,711
LIABILITIES AND NET ASSETS	\$ 112,164	\$ 32,880	\$ 145,044	\$ 235,775

NOTES TO THE FINANCIALS

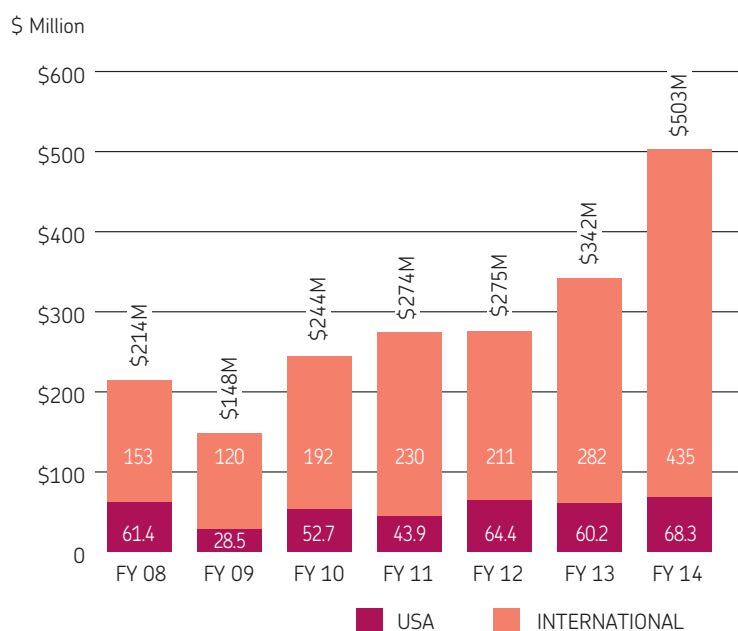


↑ NUMBER OF SHIPMENTS

FISCAL YEAR (FY) 2014 RESULTS

The overall assistance furnished by Direct Relief in FY14 was a record \$506 million. These resources were obtained from private sources and amounted to \$455 million. Direct Relief provided 7,427 shipments of humanitarian medical material aid, including pharmaceuticals, medical supplies, and medical equipment. The more than 1,983 tons (just over 3.9 million pounds) of material aid were furnished to local health programs in 70 countries, including the United States, and had a combined wholesale (\$501m) and retail (\$2.3m) value of \$503 million. The pharmaceuticals contained in these aid shipments were sufficient to provide over 300 million Defined Daily Doses (DDD). DDD is a measure of drug utilization developed by the World Health Organization (WHO) and maintained by the WHO Collaborating Center for Drug Statistics methodology at the University of Norway in Oslo. Direct Relief uses this as a measure of pharmaceutical aid provided.

In addition, the organization provided \$2.9 million in the form of cash grants to dozens of locally-run health programs in areas affected by tornadoes (U.S.) in 2014, Typhoon Haiyan in November 2013, super storm Sandy in November 2012, the March 2011 earthquake and tsunami in Japan, the January 2010 earthquake in Haiti, and numerous other partners providing health services in other non-disaster areas



↑ EXPANDING ASSISTANCE

COMPARISON TO PREVIOUS FULL YEAR'S RESULTS

All financial statements presented in this report show both the results for FY 2014 and those of FY 2013 for comparison purposes.

LEVERAGE

In FY 2014, for every \$1 contributed and spent for our humanitarian assistance program (excluding emergency response), the organization provided \$46 worth of wholesale medical material assistance, as compared to \$40 in FY 2013. These expenses totaled \$10.4 million. The expenditure of these funds enabled Direct Relief to furnish \$475 million (wholesale value) of medical material resources to 70 countries for the support of ongoing health needs.

CASH GRANTS

In addition to the core medical material assistance program, Direct Relief also provided financial assistance of \$2.9 million through cash grants. The majority of these grants (approximately \$1.7 million) were made from designated contributions received in this and past fiscal years for U.S. tornado relief in 2014, Typhoon Haiyan in November 2013, super storm Sandy in November 2012, the March 2011 earthquake and tsunami in Japan, the January 2010 earthquake in Haiti, and numerous other partners providing health services in other non-disaster areas.

In the current fiscal year, the organization incurred \$1.75 million, \$696 thousand and \$522 thousand in cash expenditures for the Typhoon Haiyan response and the Japan earthquake and the Haiti earthquake responses, respectively. Within these amounts, \$615 thousand for Typhoon Haiyan, \$696 thousand for Japan—and \$522 thousand for Haiti—was in the form of cash grants to support essential recovery efforts conducted by local, grassroots non-governmental and community groups in those areas. As of June 30, 2014, the organization had spent over 36 percent of funds received for Typhoon Haiyan, over 99 percent of the funds received for Japan and over 99 percent of the funds received for Haiti.



Twenty three million people—1 in 13—receive care at nonprofit community health centers across the United States. Direct Relief supports 1,200 clinics and health centers nationwide, is the only nonprofit licensed to distribute pharmaceuticals in all 50 states, and is the only nonprofit that is VAWD accredited. Since 2004, Direct Relief has provided \$400 million in free medications and supplies to these front-line points of care for people in need.

STAFFING

These activities were accomplished by a staff which, as of June 30, 2014, comprised 62 positions (57 full-time, five part-time). Measured on a full-time equivalent (FTE) basis, the total staffing over the course of the year was 57.1. This figure is derived by dividing the total hours worked by 2,080, the number of work hours of a full-time employee in one year. Two persons each working half-time, for example, would count as one FTE.

In general, staff functions relate to three basic business functions: programmatic activity, resource acquisition/fundraising, and general administration. The following sections describe the financial cost of our organizational activities, how resources are spent, and how donor funds are leveraged to provide assistance to people in need throughout the world.

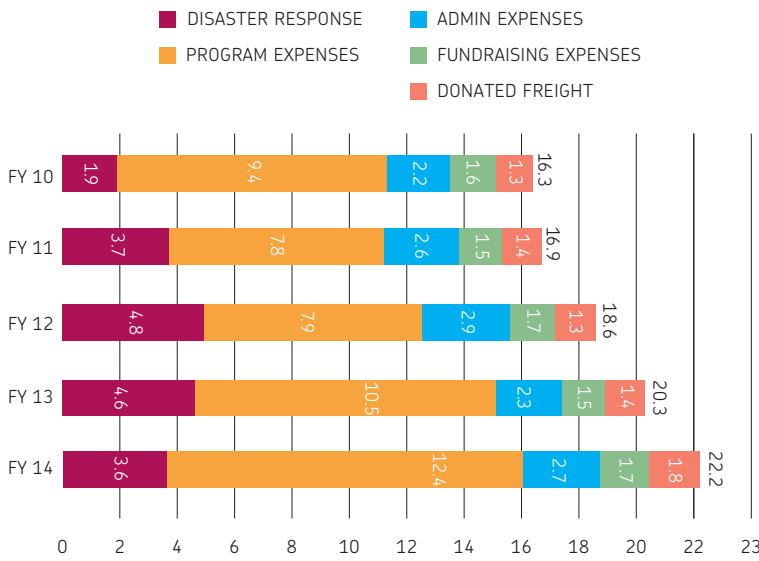
PROGRAM EXPENSES

In Fiscal Year 2014, Direct Relief's expenditure on program activities totaled \$20.15 million, \$3.83 million of which paid for salaries, related benefits (health, dental, long-term disability insurance, and retirement-plan matching contributions), and mandatory employer paid taxes (Social Security, Medicare, workers' compensation, and state unemployment insurance) for 32 full-time and three part-time employees engaged in programmatic functions.



→ Cash grants to partner organizations (\$2.9 million, including \$615 thousand in response to the Typhoon Haiyan, over \$696 thousand for the Japan earthquake and tsunami relief, \$522 thousand for Haiti earthquake relief and numerous other partners providing health services in other non-disaster areas)

- Ocean/air freight and trucking for outbound shipments to partners, in-country transportation and inbound product donations (\$4.4 million, of which \$1.8 million was donated)
- Travel for oversight and evaluation (\$420 thousand); contract services (\$3.5 million, of which \$2.6 million was donated); packing materials and supplies (\$360 thousand); and disposal costs for expired pharmaceuticals (\$112 thousand)
- The value of expired products disposed of (\$25.2 million)
- A pro-rata portion of other allocable costs (see page 27)



← PROGRAM EXPENSES BY FUNCTION

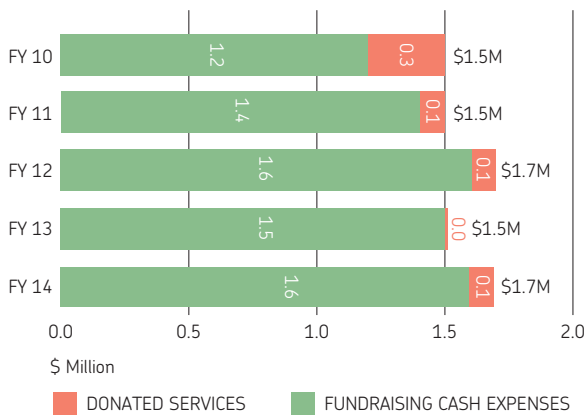
FUNDRAISING EXPENSES

Direct Relief spent a total of \$1.7 million on cash acquisition and fundraising in Fiscal Year 2014. These expenses (other than donated services) were paid from funds received out of the assets of the Direct Relief Foundation. A total of \$1.1 million was spent for salaries, related benefits, and taxes for ten full-time employees engaged in cash acquisition and fundraising.

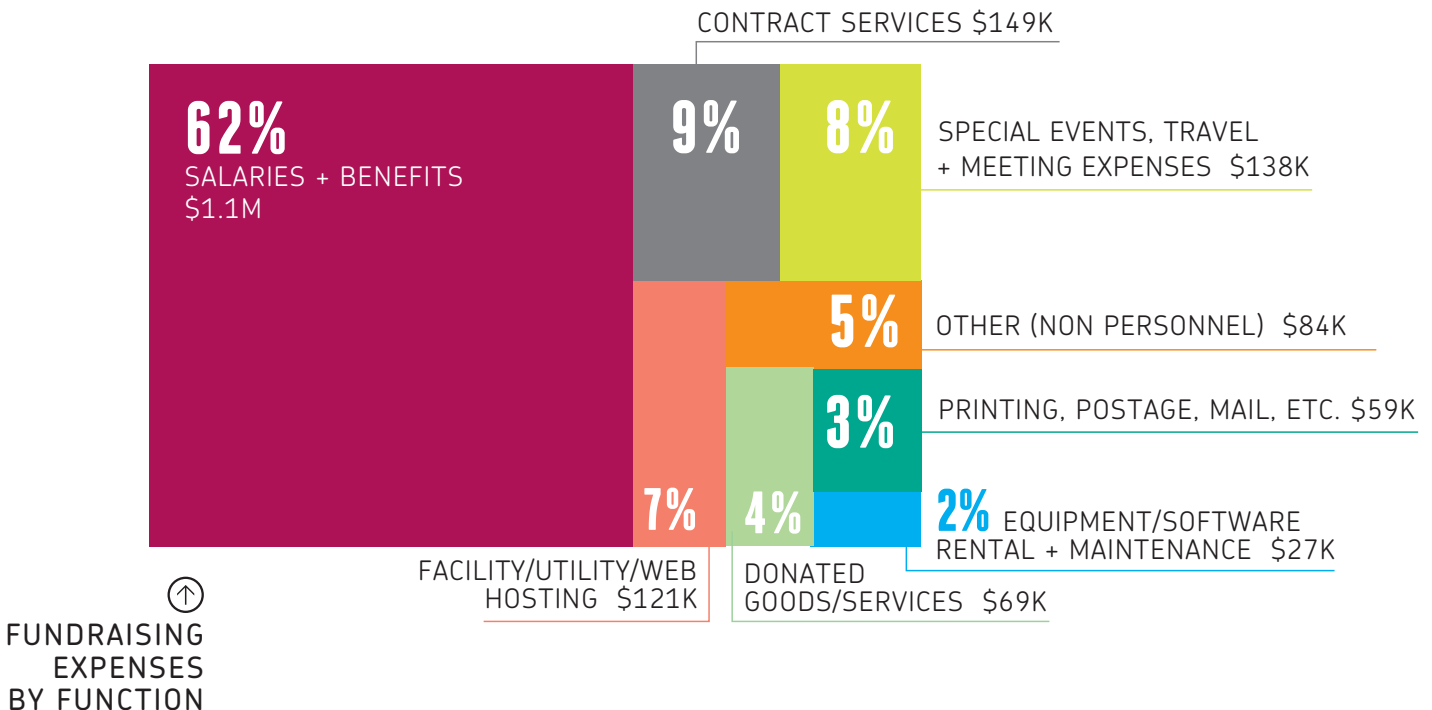


- \$60 thousand for the production, printing, and mailing of newsletters, the annual report, tax-receipt letters to contributors, fundraising solicitations, and informational materials
- \$6 thousand in advertising and marketing costs
- \$35 thousand in travel and mileage-reimbursement expenses
- \$215 thousand in contract services (\$66 thousand of which were donated services)
- \$27 thousand in supplies in support of the fundraising staff
- \$33 thousand in outside computer services related to fundraising
- A pro-rata portion of other allocable costs (see page 27)

FUNDRAISING EXPENSES



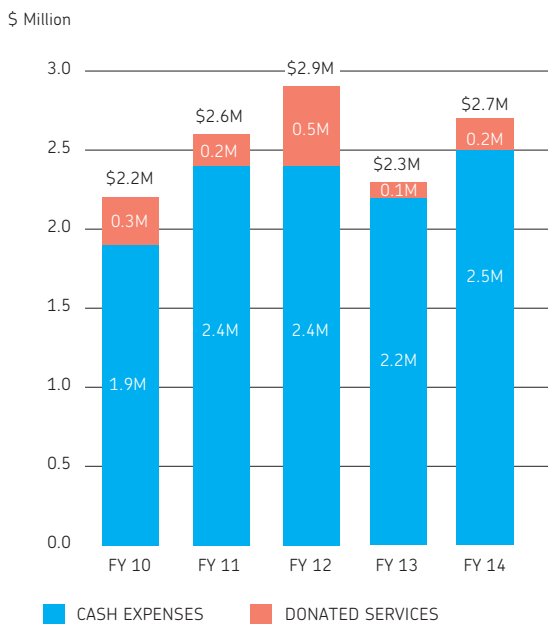
NOTE: It should be noted that Direct Relief does **not** classify any mailing expenses or costs for informational materials as “jointly incurred costs”—an accounting practice that permits, for example, the expenses of a newsletter containing information about programs and an appeal for money to be allocated partially to “fundraising” and partially to “public education,” which falls under program costs. The \$39 thousand that was incurred for such expenses was only allocated between fundraising and administration expenses.



MANAGEMENT AND GENERAL EXPENSES

Direct Relief spent a total of \$2.7 million on administration. Approximately \$250 thousand of this amount was paid from funds received out of the assets of the Direct Relief Foundation. Administration expenses are those that relate to financial and human resource management, information technology, communications, public relations, and general office management. A total of \$1.45 million was for salaries, related benefits, and taxes for 15 full-time employees and two part-time employees engaged in administration and financial management.

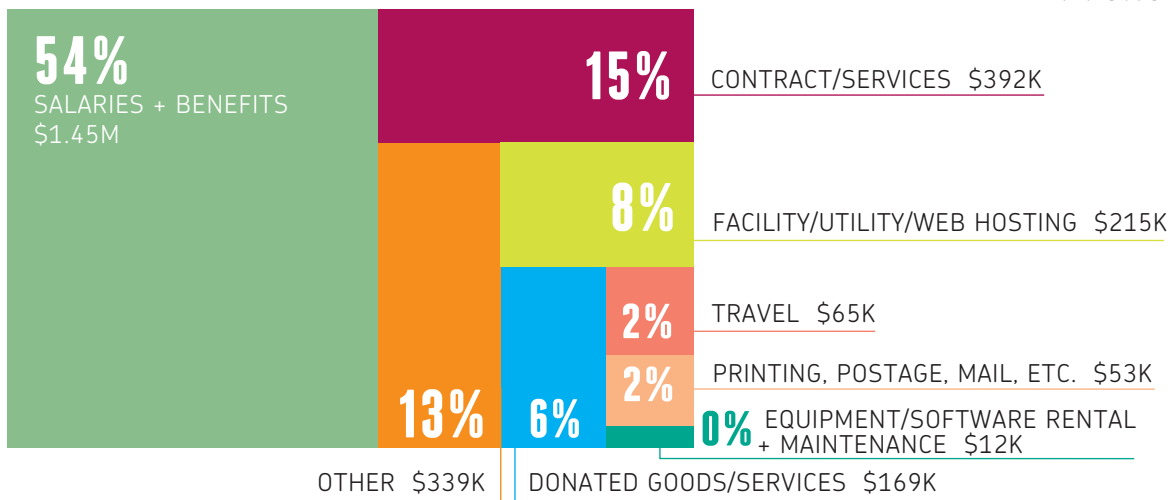
- \$114 thousand in credit card, banking, and brokerage fees
- \$50 thousand for duplicating and printing
- \$511 thousand in contract services (\$125 thousand of which were donated services, GSK PULSE Volunteers \$59 thousand, continuous quality improvement consulting \$28 thousand)
- \$59 thousand in accounting fees for the annual CPA audit, payroll processing and reporting, and other financial services
- \$99 thousand in legal fees, of which \$33 thousand was provided pro bono for legal representation related to general corporate matters
- \$7 thousand in taxes, licenses, and permits (Direct Relief is registered as an exempt organization in each U.S. state requiring such registration)
- A pro-rata portion of other allocable costs (see page 27)



MANAGEMENT & GENERAL EXPENSES ALSO INCLUDED:

MANAGEMENT & GENERAL EXPENSES

MANAGEMENT & GENERAL EXPENSES BY FUNCTION



OTHER ALLOCABLE COSTS

Direct Relief owns and operates a 40 thousand square-foot warehouse facility that serves as its headquarters and leases another 23 thousand square-foot warehouse. Costs to maintain these facilities include mortgage interest, depreciation, utilities, insurance, repairs, maintenance, and supplies. These costs are allocated based on the square footage devoted to respective functions (e.g. fundraising expenses described earlier include the proportional share of these costs associated with the space occupied by fundraising staff). The cost of information technology services are primarily related to the activities of the respective functions described above. These costs are allocated based on the headcount devoted to the respective functions.



“We efficiently and effectively use the resources entrusted to us by our donors to provide extraordinary value for money so that we can help more people and fulfill our mission of a healthier world.”

◀ **BHUPI SINGH,**
Direct Relief
Executive VP, COO, & CFO

EXECUTIVE COMPENSATION


100% of the President and CEO's compensation was paid from funds provided by Direct Relief Foundation. His compensation is allocated 50 percent to administration and 50 percent to fundraising.




Direct Relief's Andrew MacCalla delivers critically-needed medicines on Leyte Island, Philippines soon after Typhoon Haiyan devastated the region.




23519
37

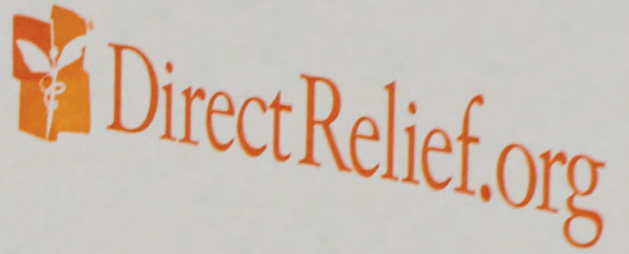
 DirectRelief.org

 DirectRelief.org

 DirectRelief.org

 DirectRelief.org

 DirectRelief.org



DirectRelief

23573
37



INVESTORS

Our deepest thanks to Direct Relief's investors, whose generosity has enabled service to millions of people throughout the world.



DirectRe

DirectRelief.org

23573



FOUNDERS' SOCIETY

*We are honored to recognize members of
Direct Relief's Founders' Society. Through their*

LEADERSHIP + COMMITMENTS

*of \$100,000 or more, these extraordinary individuals and
family foundations have championed Direct Relief and enabled
program innovation and expansion.*

Mrs. Dorothy Adams
Anonymous
Judy and Bruce Anticouni
Mr. and Mrs. Philip Berber
Mrs. Beatrice (Brownie) Borden
Mrs. Maria Bregy
François and Sheila Johnson Brütsch
Mr. Bruce Campbell
Dolores and Robert Cathcart
Mr. and Mrs. William C. Clarke III
Ms. Laurie Converse
Mr. and Mrs. John D. Curtis
Mr. and Mrs. Thomas J. Cusack
Peggy and Steve Dow
Mr. and Mrs. James Drasdo
Nancy and Tom Elsaesser
Dr. and Mrs. Thomas E. Everhart
Peggy and Gary Finefrock
Mrs. Barbara Hunter Foster /
The Pacer Foundation
Mr. and Mrs. Gregg L. Foster
Mrs. Louise B. Gaylord
Kate and Dick Godfrey
Dr. Catherine Grotelueschen and Mr.
James H. Grotelueschen
Dr. Bert Green and
Ms. Alexandra Brookshire /
Brookshire Green Foundation
Mr. and Mrs. William T. Hammond

Mr. Chip Harlow / Precision Strip
Mrs. Mary Harvey
Betty and Stan Hatch
Priscilla Higgins, Ph.D. and Mr. Roger
W. Higgins / Higgins-Trapnell Family
Foundation
Brett and Natalie Hodges /
WWW Foundation
Mr. Erle G. Holm
Mrs. Jackie Inskip
Mr. and Mrs. James H. Jackson /
The Ann Jackson Family Foundation
Mr. Rehan A. Jaffer
Ms. Mer James
Mr. Michael Jenkins
Mr. and Mrs. Peter O. Johnson, Sr.
Ms. Wendy E. Jordan
Mr. and Mrs. Donald S. Kennedy
Dorothy Largay and Wayne Rosing
Mr. and Mrs. Seymour Lehrer /
The Lehrer Family Foundation
Nancy Lessner
Judith and Glenn Lukos
Mr. and Mrs. Richard E. Lunquist
Mr. Ken Maytag / Fred Maytag Family
Foundation
The Nurture Foundation
Mr. and Mrs. Gary S. Newman
Mrs. Marcella R. Parker
Jo Anne and Donald E. Petersen

Alan R. Porter
Mr. John Powell and Ms. Melinda Lerner
Mr. and Mrs. Alexander M. Power
Mr. and Mrs. Michael E. Pulitzer
Mr. and Mrs. James J. Roehrig /
Roehrig Family Foundation
Bobbie and Gerry Rubin
Mr. Ummul Ruthbah
Maryan and Richard Schall
Mrs. Nancy B. Schlosser / Nancy B. & C.
William Schlosser Family Foundation
Mrs. Michiyo Schmidt-Petersen
Mr. and Mrs. Edgar H. Schollmaier
Mrs. Nan Schow /
The Schow Foundation
Ms. Rachael Schultz
Patricia and Jim Selbert
Mrs. Harold Simmons /
Harold Simmons Foundation
Mrs. Krishan G. Singh
Stone Family Fund
Mr. and Mrs. John W. Sweetland
Mr. and Mrs. John Swift & the Swift
Foundation / MSST Foundation
Tomchin Family Charitable Trust
Mr. and Mrs. George Turpin, Sr.
Mr. and Mrs. Guhan Viswanathan
Mr. and Mrs. Cooper Williams
Mr. David A. Yawitz

FISCAL YEAR 2014 INVESTORS

Contributors to Direct Relief from July 1, 2013 to June 30, 2014

‡ indicates donors who have given for 5 or more consecutive years

* indicates former board members

THE PRESIDENT'S CIRCLE HONORARY CHAIRS (\$1,000,000 +)

AbbVie Foundation
Shire

VISIONARIES (\$250,000 +)

‡ Abbott Fund
Micky and Madeleine Arison Family Foundation
‡ BD
Desai Family Foundation
‡ FedEx
‡ Johnson and Johnson Family of Companies
‡ Pfizer, Inc.
Santa Barbara Vintners' Foundation
Wallace Genetic Foundation

LUMINARY (\$100,000+)

‡ Amgen Foundation, Inc.
Mr. and Mrs. Tim Bradley
The Peter and Carmen Lucia Buck Foundation
‡ Mr. Bruce Campbell
‡ The Fistula Foundation
‡ GlaxoSmithKline Foundation
The Estate of Dale E. Kern
‡ Dorothy Largay and Wayne Rosing
News America Incorporated
Estate of Mary Joan Staves
‡ Mr. and Mrs. Guhan Viswanathan
Weingart Foundation

AMBASSADORS (\$50,000 +)

Beaver Family Foundation
‡ Boehringer Ingelheim Cares Foundation
‡ Bristol-Myers Squibb
The C.A.L. Fund
The California Endowment
‡ Roy R. and Laurie M. Cummins Fund of The Oregon Community Foundation
‡ Dodge and Cox
The Henry L. and Grace Doherty Charitable Foundation
Eli Lilly and Company Foundation
Fairl Charitable Fund
Mr. and Mrs. Gregg L. Foster
Gene Haas Foundation
Humble Bundle
‡ Independent Charities of America
Mr. Michael Jenkins
Dr. Laurence P. Kerrigan
Jay W. Lang, M.D. and Mrs. Eleanor Lang
Mr. and Mrs. Richard E. Lunquist
Morris Family Fund
The News Corporation Foundation
The P&G Fund
Ralph M. Parsons Foundation
‡ Barbara and Gerrold Rubin / Barbara N. Rubin Foundation
Urban Outfitters, Inc.
Zinpro Corporation
Zynga Game Network

ADVISERS (\$25,000 +)

Abbott
AbbVie
AEC Trust
Jane H. Alexander Trust
Mrs. Patricia Aoyama and Mr. Chris Cleveland
Beverly Tree Farm LLC
Mr. and Mrs. Ashish Bhutani
Judith Haskell Brewer Fund
‡ C. R. Bard Foundation
CECP
The Chartis Foundation
Ms. Gladys G. Cofrin
Cost Plus World Market
Diabetes Australia
Dr. Francis P. Chiaramonte Private Foundation
Tom and Nancy Elsaesser / Tom and Nancy Elsaesser Foundation
‡ Mr. and Mrs. Mike Gabrielson
‡ Josephine Herbert Gleis Foundation
Grifols, Inc.
Mr. Richard Hausman
‡ The Hexberg Family Foundation
‡ Hospira Foundation
Mr. Rehan A. Jaffer
‡ Linked Foundation
Mr. and Mrs. J. C. Massar
‡ Merck and Co., Inc.
‡ Microsoft Corporation
‡ Mr. and Mrs. Hank Mitchell
Mr. and Mrs. Gary S. Newman
Alan R. Porter
Mr. and Mrs. Steven W. Rapp
Michael T. Riordan Family Foundation
‡ Rock Paper Scissors Foundation
‡ Regina and Rick Roney / Roney Family Foundation
Stone Family Fund
Mr. and Mrs. Gary R. Tobey / The Susanne and Gary Tobey Family Foundation
‡ US Bancorp Foundation
USAID
Wisconsin Evangelical Lutheran Synod - WELS
‡ The Wood-Claeysens Foundation

ADVOCATES (\$10,000 +)

A.e.L.K. Foundation
Andrew Adesman
Aera Energy LLC
Lynn and Scott Alexander
‡ The Allergan Foundation
Alpha/Omega Charitable Foundation
‡ Mr. and Mrs. David H. Anderson
Mr. Lamberto Andreotti
Mr. Tim Armour
‡ Ayudar Foundation
Babare Family Foundation
Balanced, Inc.
‡ S. Balolia Family Foundation
Mrs. Barbara R. Banke
Baxter International
Benevity Social Ventures

Ms. Anne Bergl
Mr. and Mrs. Richard Bergmark
Mr. and Mrs. James R. Bickel
The Birk Family Foundation
‡ Mr. and Mrs. Kendall R. Bishop
Ms. Claudia Bonnist
Mr. Roger Bower
Dr. and Mrs. David Bradford
Brickyard VFX
Mr. Chad E. Brown
‡ Kyle Brown
JT and Angela Burke / Burketriolo Family Foundation
Ms. Deanna Calhoun
Dolores and Robert Cathcart / Cathcart Millennium Foundation Inc.
Cathedral of Joy
‡ Mrs. Bettina W. Chandler
‡ Mr. and Mrs. David P. Compton
County of Santa Barbara
Mrs. Caryl Crahan
‡ Mr. and Mrs. Thomas J. Cusack
Mr. and Mrs. Robert F. Davey
Mr. and Mrs. Geoff de Lesseps
Dentsu McGarry Bowen LLC
Dermalogica Foundation
Deyo Family Fund
‡ The Julia Stearns Dockweiler Charitable Foundation
Mr. and Mrs. R. Chad Dreier
Christine and Dan Durland
Eileen Fisher, Inc.
‡ Mr. and Mrs. Paul Einbinder
Ms. Selma Ertegun
‡ Dr. and Mrs. Thomas E. Everhart
Mrs. Samie Falvey
The Farvue Foundation, Inc.
Mr. and Mrs. Joseph J. Fazio
Catherine and Richard Fields
‡ Mr. Stephane H. Finkenbeiner
Roger S. Firestone Foundation
‡ Mr. and Mrs. Jeremy Fletcher
‡ Mary Alice Fortin Foundation, Inc.
Fredman Family Foundation
Mr. Edward C. Friedel
Mr. and Mrs. Ernest J. Getto
David L. Gibbs, Ph.D.
‡ Mr. and Mrs. J. Michael Giles / The Giles Family Foundation
‡ Mr. and Mrs. Frederick W. Gluck
Zac Goldberg
Golden Touch Imports Inc.
Goldman Sachs Group, Inc.
Mr. and Mrs. Richard Goodrich
Goodwin Family Memorial Trust
‡ Google Matching Gifts Program
Mr. and Mrs. Martin Gore
‡ Dr. Bert Green and Ms. Alexandra Brookshire / Brookshire Green Foundation
Dr. and Mrs. Steven Green
Mr. Adam Greene
‡ Ms. Jennifer Greiner
‡ Mr. and Mrs. William T. Hammond
Hardware Distributors Ltd.
‡ Betty and Stan Hatch
‡ Mr. and Mrs. Frederick J. Herzog
‡ Dr. Linus Ho
‡ Brett and Natalie Hodges
‡ Mr. Gerhart Hoffmeister
Illinois Tool Works Foundation
‡ Mr. John Irish
‡ Angel Iscovich, M.D. and Mrs. Lisa Iscovich / The Iscovich Foundation
J & J Ellis Fund
Mr. and Mrs. James H. Jackson / The Ann Jackson Family Foundation
Mr. and Mrs. Haamid Jaffer
Mr. and Mrs. Richard R. Janssen
Japanese Chamber of Commerce and Industry of NY
Barbara Jaynes
Mr. Jon R. Jensen
Jin Ramen Corporation
Mr. Richard E. Jones
Sadako K. Judd Private Foundation Inc.
‡ Mr. and Mrs. Albert J. Kaneb
‡ W. M. Keck Foundation
Patricia Kaneb Kelly and Brian Kelly
Mr. and Mrs. Herbert Kendall
Ms. Joanna Kerns and Mr. Marc Appleton
The Klingbeil Family
Mr. John Kriendler / Jeannette and H. Peter Kriendler Charitable Trust
Shirley and Seymour Lehrer / The Lehrer Family Foundation
Mr. and Mrs. Fredric C. Leutheuser
The Linden Family Foundation
‡ Mr. Mark D. Linehan and Ms. Kimberly Schizas
Mr. and Mrs. Charles Logue
Mr. Michael Lohmeier
Mrs. Lillian P. Lovelace
Luma Pictures
Marafie Foundation
‡ Calvin and Phyllis Marble
The Mays Family Charitable Fund
The D.C. and Mildred B. McClain Trust
Montgomery Family Foundation
‡ Mr. Steve Moya and Mrs. Rita Moya / The M Fund
N. B. Kenney Company Inc.
Mr. and Mrs. Richard Nash
The National Institute for the Clinical Application of Behavioral Medicine
Mr. and Mrs. Henry M. Nevins
New York Film Academy
Mr. Jeff Olde
‡ Orange County Community Foundation
Ortho Clinical Diagnostics, Inc.
Mr. and Mrs. Frank R. Ostini / The Hitching Post and Hitching Post Wines
Mr. and Mrs. Jack B. Overall / The Overall Family Foundation
Ms. Hyesuk Park and Mr. Hackbin Kim
Ms. Victoria G. Pauley
Donald E. and Jo Anne Petersen / The Donald E. and Jo Anne Petersen Foundation
Mr. Nick Phiakis
Philippine National Day Organization
Pirzada Family Foundation
‡ Mr. John Powell and Ms. Melinda Lerner
Prospera Financial Services
Jie Ralls
Patrick A. and Laura M. Ramos
Charitable Foundation
Mr. and Mrs. Daniel Randopoulos / Metson Marine
Mr. Ronald Regenstrief
Mr. and Mrs. Garland Reiter
Ms. Mary P. Renner
‡ Mr. Randy Rettig and Ms. Ashley Williams
Rettig
Roche Diagnostics
Anthony and Kyra Rogers / Tony and Kyra Rogers Foundation
‡ Sanofi US Foundation for North America
Santa Ynez Band of Mission Indians
Foundation
Mrs. Michiyo Schmidt-Petersen
‡ The Schow Foundation
‡ Ms. Rachael Schultz
Schultz Family Foundation

‡ Mr. and Mrs. Mark J. Schwartz
 ‡ Patricia and Jim Selbert
 The Servants Heart Foundation
 Mr. William Shanbrom / The Shanbrom Family Foundation
 ‡ Ruth and Jay Shobe
 ‡ The Skolnick Foundation
 Mr. Fred R. Smith
 Eunice M. Stephens
 Mr. Robert Stewart
 The James M. and Margaret V. Stine Foundation
 Mr. John W. Sweetland
 Shelly Tatso
 TIF Foundation Fund
 TKF Spirit Fund of the Orange County Community Foundation
 ‡ Tomchin Family Charitable Foundation
 ‡ Turpin Family Charitable Foundation
 ‡ The David Vickter Foundation
 Mr. and Mrs. Matt Walden
 Walt Disney Company
 The Warm Hand Giving Fund
 ‡ Mr. Harold S. Wayne
 Mr. Karl Weis and Mrs. Kristen Klingbeil-Weis
 Mr. Dana White
 Wichita County Medical Alliance
 Mr. and Mrs. Frank M. Wilson III
 John Wilson
 Mr. and Mrs. George S. Writer, Jr. / The Writer Family Foundation
 WWW Foundation
 Mr. and Mrs. Anant Yardi / Yardi Systems, Inc.
 Mustafa Zaheer
 Mr. and Mrs. Robert L. Zorich
 Ms. Dale Zurawski and Mr. Geoff Slaff

\$5,000 +

A.C. Nielsen Company
 Peter and Rebecca Adams
 Mr. Charles A. Adkisson
 Arnesen Family Foundation
 Mr. and Mrs. Anderson J. Arnold
 Warwick Atkins
 Mr. Patrick Atkinson
 Atrius Health
 Austrian American Council West
 Ayco Charitable Foundation
 ‡ B & B Foundation
 Anna Bang
 ‡ The Bank of New York Mellon
 Mr. and Mrs. Thomas L. Beckmen
 Howard B. Bernick Foundation
 Elizabeth Bertuccelli Family Trust
 Dr. Paul Bessette
 Felix Bhandari
 ‡ Mr. Scott Booker
 Jason Bowlds
 ‡ BP Foundation, Inc.
 ‡ Dr. Bronwen G. Brindley and Mr. John L. Warren
 Mr. Jerome V. Bruni
 Mr. and Mrs. Daniel Burnham
 ‡ Mr. Charles F. Burton III
 Charles Carey
 Jeffrey Chanin
 The Charles Hotel
 Mrs. Lee Chase
 Chingtzu Chien
 Mr. and Mrs. Andrew Chou
 Cisco Systems, Inc.
 Mr. and Mrs. Barton E. Clemens, Jr.
 ‡ Mr. and Mrs. A. Joseph Collette
 Colliers USA Foundation
 Mr. Dennis A. Cooper
 ‡ Mr. and Mrs. Scott Cooper
 CRP Industries
 Customlnk LLC
 Mr. Charles De Marais
 Mr. and Mrs. David E. Decker
 Mr. Dante Di Loreto
 Mr. and Mrs. John Doordan
 ‡ Peggy and Steve Dow
 Mr. and Mrs. James Drasdo

Michael J. Echevarria / The Echevarria Family Foundation
 Mr. and Mrs. Stephen T. Edwards
 Erickson Family Charitable Foundation
 Etsy Inc.
 Mr. Mark Fegley
 The Feldman Family Foundation
 Filipino Community Association
 ‡ Mr. and Mrs. Brooks Firestone
 ‡ Honorable and Mrs. Paul G. Flynn
 ‡ Dr. and Mrs. John M. Foley
 ‡ Mr. Eric Forbes
 Mrs. Barbara Hunter Foster / The Pacer Foundation
 Frankston Family Fund, Jeff and Sherri Frankston
 Mr. Richard Fried
 Laurel Friedmann
 Ms. Dorothy Hannon Gardner
 Mrs. Louise B. Gaylord
 GBG Foundation
 Ms. Audrey E. George and Mr. Kurt Knutzen
 Gaia Germani
 Mr. and Mrs. Allen Gersho
 Mr. Jere J. Gerszewski
 Mr. and Mrs. Owen B. Gilmore
 Danielle Goulette
 ‡ Mr. and Mrs. Philip E. Haight
 Haight Family Fund
 Mr. and Mrs. John M. Hall
 Hanson Bridgett LLP
 Mr. and Mrs. Lawrence D. Hazzard
 Mr. John C. Hilliard and Mrs. Christine Bruce
 Mr. and Mrs. Robert W. Hirsch
 Hobart and William Smith College
 Mr. Joseph A. Hoffman
 ‡ Mr. Erle G. Holm
 E. Carmack Holmes M.D. and Mrs. Carolyn Holmes
 John C. and Mary Jane Howard Foundation
 Hutton Parker Foundation
 Ms. Julia Jackson
 Mr. Joshua Jernigan
 Ellen and Peter Johnson
 Bruce Allen Kleist Fund
 John Krawczyk
 KTGy Group
 Dr. David Kurti
 Ms. Sharon H. Levy
 ‡ Ms. Shirley H. Lincoln
 Mr. Christopher Line
 Sarah and Peter Lion
 ‡ Mr. Igor Liskovets and Ms. Bianca Ling
 Dr. Raghu Loganathan
 The Looker Foundation
 Mrs. Pamela Lopker and Mr. Karl Lopker / Lopker Family Foundation
 Lost Man Foundation
 Mr. Carl H. Ludwig
 Lutheran Community Foundation
 Mrs. Jane Lynch
 Mabuhay Asian Culture Katipunan
 Mr. Joseph MacDougald
 Mr. and Mrs. Gary Martin
 Tami and Matthew Matias
 Ms. Nancy L. Mauro
 ‡ The Harold McAlister Charitable Foundation
 Timothy McCormick
 ‡ Mr. William McCune
 McCusker-Gill Inc.
 Mr. Bill McMahon
 Mr. Alfred E. McNair, Jr.
 ‡ Mr. Cal Meeker
 Metson Offshore
 ‡ Mr. Craig Meyer
 Microwave Telemetry
 Ronald Milano
 Mr. Walt Miles
 Ms. Anne Moller
 ‡ Montecito Bank and Trust
 Mr. and Mrs. J. Roger Morrison
 Samuel B. and Margaret C. Mosher Foundation

‡ Mr. David K. Mowery
 Mitchell Nadel
 ‡ Mr. and Mrs. Robert Nakasone / Nakasone Family Foundation
 NBC Universal
 Dr. Mark S. Nelkin and Ms. Lenore Malen
 Network Hardware Resale
 New York Football Giants, Inc.
 Constance O'Classen
 Manish Patel
 Mr. Samir A. Patel
 ‡ Mr. and Mrs. William C. Pattison
 PayPal, Inc.
 Susan K. Pederson Foundation
 Penske Motor Group
 ‡ Ms. Leticia Petropoulos
 The Louis and Harold Price Foundation
 Principal Life Insurance Company
 Pro Packing, Inc.
 Mr. and Mrs. Ron Pulice
 ‡ Qualcomm Inc.
 Rag and Bone Men, LLC
 Mr. and Mrs. Keith B. Reichel
 Mr. Arthur J. Rice and Ms. Valerie Ronald
 Mr. and Mrs. Charles D. Rikel
 Mia Riley
 Darren Ross
 Jay Roth
 ‡ S E Pipe Line Construction Co.
 S & F Management Company LLC
 Maryan and Richard Schall
 ‡ Schleyer Foundation
 Mr. George E. Schoellkopf and Mr. Gerald Incandela
 Ms. Diane R. Unangst and Mr. William H. Scholtz
 Ms. Jean A. Schuler / Schuler Family Foundation
 Mr. and Mrs. Mark Schulhof
 Seattle School District No. 1
 Laura Severance
 ‡ Mr. and Mrs. Michael Sharp
 Mr. and Mrs. Jerold M. Shea
 Ryan Shea
 Single Step Foundation
 Mr. and Mrs. John Singleton
 Christina Smith
 Richard Smith
 Mr. and Mrs. Randall V. Solakian
 Florence and Laurence Spungen Family Foundation
 Mr. and Mrs. Warren Staley
 Stebbins-Duffy Inc.
 Steele Family Foundation
 Stock Gumshoe
 Dr. and Mrs. John F. Stoll
 Roger and Susan Stone Family Foundation
 Lauren Stone
 ‡ Ms. Rosalind C. Stubenberg
 Ms. Susan Sullivan
 Mr. Christopher Suozzo
 Mr. and Mrs. Arn Tellem
 Mrs. Mary Jean Thomson
 ‡ Ms. Mary P. Tighe and Mr. Andrew M. Liepman
 Mr. and Mrs. Thomas Tighe
 Mr. and Mrs. George Turpin, Sr.
 Eugene Ung
 Union Pacific Foundation
 Ajay Upadhyaya
 Mr. James M. VanArtsdalen
 ‡ Mr. and Mrs. Cooper Williams
 Nancy Williams
 Thomas Henry Wilson Family Fund
 Mr. John M. B. Wilson
 Mr. and Mrs. John Woodside
 ‡ Yorba Oil Company, Ltd.
 James Ziegenmier
 Esmail and Mary Zirakparvar Family Fund

\$2,500 +

Mr. and Mrs. Lawyer L. Acker
 Action Wholesale Products
 Advanced Energy
 Mr. Aristotle A. Alexander
 ‡ Lindsay S. Alger M.D.

Mr. and Mrs. Kent Allebrand
 American Society of the Order of St. John
 Mr. and Mrs. John Andelin
 ‡ Steven W. Arle, M.D. and
 Mrs. Kathleen B. Arle
 Mr. Kurt H. Asplund
 Assured Guaranty Corp.
 Ryan Avanzado
 ‡ Ms. Judith Babcock
 Bank Leumi USA
 ‡ Mr. and Mrs. Daniel E. Barnett
 William Barron
 ‡ Mr. and Mrs. Arnold Bellowe / The Arnold and Jill Bellowe Family Foundation
 Mr. and Mrs. Barrie Bergman
 Paul Best
 ‡ Merle E. Betz, Jr.
 ‡ Mr. and Mrs. David F. Boyd
 Allison Bragard
 Mr. Robert Breard
 Brillo-Sonnino Family Foundation
 Broadridge Foundation
 Mrs. Kebi Brown
 Mr. Aris A. Buinevicius and
 Ms. Martha C. Horne
 Cardinal Health Foundation, Inc.
 Mr. Antonio J. Carneros
 Ms. Caroline Hartshorne Carroll
 ‡ Mr. John Catlett
 ‡ Pakaksorn Celli
 ‡ Ms. Carolyn Chandler
 Mr. Lewis Cheney
 ‡ Chevron Corporation
 ‡ Sylvia T. Chiang
 Clark Family Foundation
 Mr. and Mrs. Laurence Costello
 Mr. Michael Crum
 ‡ Mr. and Mrs. Brian L. Cummings
 Cupertino High School
 Vincent Dailey
 Mr. and Mrs. Lawrence W. Dam
 ‡ Mr. Gregory Danforth
 Ralph D'Annuncci
 Mr. and Mrs. James Davidson
 Ms. Patty DeDominic and Mr. Gene Sinsler
 Alana Denison and Eric Schaffer
 ‡ Ms. Jacqueline DeRosa
 ‡ Ms. Susan C. DeWit
 ‡ Mr. Ricky W. Doak
 ‡ The Doebling Foundation
 Tonya Dokken
 Nathan Dooley
 Ms. Mary W. Drake
 Mr. Michael J. Duffy
 William Dwyer
 Roy and Ida Eagle Foundation
 Kay Egawa
 Richard Emsiek
 Endeavor Management
 Ms. Mary Ann Endo
 Ermenegildo Zegna Holditalia
 Simon Eyers
 Mr. Robert P. Fearheiley and Ms. Katherine L. Courtney
 ‡ Mr. James W. Fischer
 ‡ FLIR Systems, Inc.
 Mr. Arthur P. Frigo, Sr.
 The Fund for HHC
 ‡ Mr. and Mrs. Adalberto Garcia
 ‡ GE Foundation
 Shakira Geanes
 Debra P. Geiger and Eliot Crowley
 ‡ Mr. and Mrs. J. Thomas Gerig
 Global Angels
 Mr. and Mrs. Michael Gordon
 ‡ Ms. Barbara Graper
 ‡ Mr. Gary Gray
 ‡ Mr. Nicolas Hamatake
 ‡ Mr. and Mrs. William Bradford Hamre
 ‡ Dr. Helen Hansma
 Mr. and Mrs. Joseph Hardin, Jr.
 Charles Harding
 Ms. Sarah V. Harrison
 Mrs. Raye Haskell / The Haskell Fund
 Mr. and Mrs. Sean Hecht
 Mr. Daniel Heise
 Mr. and Mrs. George M. Helmkamp, Jr.

‡ Jane B. Cook 1983 Charitable Trust
 ‡ Mr. Lee G. Hendricks
 Mr. Russell Heywood
 William Higgins
 Mr. and Mrs. Richard T. Hoffman
 ‡ Mr. Donald S. Holmes
 HP Employee Charitable Giving Program
 ‡ Terrence Joseph Hughes
 ‡ Ms. Vikki Hunt
 Mr. Derk Hunter
 ‡ IBM Corporation
 InGodWe Trust
 International Medical Health Organization
 International Union of Bricklayers and
 Allied Craftworkers
 Irvine High School
 ‡ Ms. Karen Iverson
 ‡ Mr. and Mrs. Donald Jackson
 Ms. Katie Jackson
 Jason Jay
 Bruce Jetton, M.D. and Mrs. Janice Jetton
 Francesca Johnson
 The Johnson Revocable Trust
 Mr. Stephen C. Johnson
 Janet Johnston
 Timothy Jones
 JP Morgan Chase Foundation
 Mr. Roland N. Karlen
 Mr. and Mrs. Thomas Karsten
 Katipunan - MD Coalition Help Philippines
 Mr. Matthew J. Kaufmann and
 Ms. Holly Bell
 Michael King
 ‡ Mr. James Kornell
 Mr. Joel Kreiner and Ms. Stina Hans
 Mr. and Mrs. Neil J. Kreisel
 Krypton Solutions LLC
 Mr. Bill Lahey
 Ms. Kathleen Landkammer
 Mr. Denis A. Lehane
 Mr. and Mrs. Abe Leider
 Ms. Mary Lenz
 ‡ Mr. and Mrs. Donald J. Lewis
 The Lewis Family Foundation
 ‡ Miss Anne Lieu
 Mr. Mack C. Lindsey
 Mr. Hernan Lopez
 Mr. Aaron Loukonen
 LTK Engineering Services
 John MacNab
 ‡ Kim Margolin, M.D.
 ‡ Mr. Richard D. Maxwell
 Mr. Thomas McIntosh
 ‡ Mr. and Mrs. Leo McIntyre
 Mr. and Mrs. Charles McKinney
 Mr. and Mrs. Harry McMahon
 The Medtronic Foundation
 ‡ Mrs. Sonal N. Mehta
 Vanessa Meincke
 Mentor Worldwide LLC
 Virginia Metzler Family Charitable
 Foundation
 Ms. Deanna J. Miller
 Mr. and Mrs. Anthony F. Mills
 Mr. and Mrs. James Mitchell
 Mr. Bill Morrison / Morrison Family
 Foundation
 Ramaswami Narayan
 ‡ Jeff Nelson and Tina Martin
 ‡ Mr. and Mrs. Gary L. Nett
 Connie Smith Nevins
 Ms. Devon Geiger Nielsen
 ‡ Ms. Sandra Nowicki
 Matthew O'Brien
 One Percent for Humanity
 Kenneth Pappanduros
 Pranav Patel
 Mr. and Mrs. Charles F. Patrick
 Mr. and Mrs. Carl Payatt
 Charles and Anna M. Pedrazzini Private
 Charitable Foundation
 Mr. David Perez
 Mr. David A. Quam
 Susan Quesada
 Roberto Quintana
 Daniel Quintiliano

Mr. Lowell A. Read
 Mr. and Mrs. Michael Refermat
 Mr. and Mrs. James P. Reilly
 Anna and Jeremy Richmon
 Barbara and Joel Richmon
 Ms. Christine Rivera
 ‡ Mr. Michael Roberts
 Ms. Kay Robinson
 Thomas Rollerson and Michael Erickson
 ‡ Mr. and Mrs. John Romo
 Derek Rozmes
 RSP Architects, Ltd.
 Ms. Marianne Ruegsegger
 Russell Matching Gifts
 Justin Sadrian
 Jonathan Sagers
 Mr. and Mrs. John P. Sallee
 ‡ Mr. and Mrs. Denis R. Sanan
 Kurt Sanger
 Sangham Foundation
 ‡ Mr. Jefferson Scher
 ‡ Mrs. Nancy B. Schlosser / Nancy B. & C.
 William Schlosser Family Foundation
 ‡ Mr. and Mrs. John Schnagl
 Mr. David C. Schoen
 Mr. Andrew Schorr
 Stephen B. Schott
 Mr. and Mrs. Steven W. Scroggs
 Sempra Employee Giving Network
 ‡ Mohammed Shaikh, Ph.D. and Ayesha
 Shaikh, M.D.
 ‡ Jim and Ingrid Shattuck
 Marcus A. Shaw
 ‡ Mr. and Mrs. George E. Shortle, Jr. /
 George E. and Catherine H. Shortle
 Foundation
 Siegel Family Foundation
 ‡ Mr. and Mrs. Marc Silver
 ‡ The Silver Tie Fund
 ‡ Mr. and Mrs. Bhupi Singh
 Thomas Slankard
 Solakian Properties Inc.
 Mr. Ben Sosinski
 Mr. Charles H. Sparkes
 Norman F. Sprague Jr. Foundation
 St. Thomas Aquinas Parish
 Stein Gardens & Gifts
 ‡ Ms. Irene V. Steinman
 Stuart Levine & Associates LLC
 Beverly Sullivan
 Donna Swain
 ‡ Mr. and Mrs. Steven Swanson
 Mr. Michael Sweeney
 Mr. Kelly F. Taylor
 Taylor, Ganson & Perrin LLP
 Teradata
 Andrew Tilton
 John Toole
 Timothy Tseng
 Tufts University
 Mr. and Mrs. Sam Tyler
 Union Bank Foundation
 United Way of the Greater Triangle
 Venoco, Inc.
 Mr. and Mrs. James Villanueva
 Mr. and Mrs. Herbert R. Wannan
 Warrington Foundation
 Mr. and Mrs. Steven A. Weintraub
 ‡ Richard M. Weisman, M.D.
 West Family Charitable Fund
 Mr. Philip White
 Mr. and Mrs. Benjamin R. Wiener
 Mr. and Mrs. James K. Williams
 Mr. and Mrs. John Williams
 Richard Winter
 WMD Asset Management LLC
 Houston Wong
 ‡ Mr. and Mrs. Clifford Wyatt
 Kathleen Yeigh
 Mr. and Mrs. Hank Ziegler
 Mr. Gene J. Zimmerman
 Mr. Theo Zimmerman
 Mr. and Mrs. William M. Zoffer

\$1,000 +
 50 Cents At A Time Fund

Ms. Jaculin Aaron
 Mina Abdelmessih
 Leticia Acosta
 Steven Adair
 ‡ Mr. and Mrs. Philip C. Adams
 Mr. and Mrs. James Adelman
 Kenneth G. Adler, M.D. and
 Katherine A. Schuppert, M.D.
 Adobe Systems, Inc.
 Suhail Afzal
 Stephen Ahart
 James Ahlers
 ‡ Mr. and Mrs. Robert E. Alberti
 Anthony Albregts
 Phyllis Alden
 Margaret Alexander
 Mr. and Mrs. Rishad Alikhan
 Mr. and Mrs. Robert Allen
 Dr. and Mrs. Thomas R. Allyn
 Mr. Warren Alpern
 Mr. Ahmad M. Al-Shugairi
 Ilter Altaras
 J. Clinton Alvord
 Mr. John Ambrose
 American International Group, Inc.
 Amigos de Bolivia & Peru
 Mr. Atila Amiri
 Anacapa Micro Products, Inc.
 Vikram Anandan
 Mr. and Mrs. Scott S. Andersen
 Corey C. Anderson
 Mr. and Mrs. Roger Anderson
 Constance Angove
 Mr. Ted Antenucci
 Arc Specialties, Inc.
 ‡ Ms. Deborah Arhelger and
 Mr. Wayne Citrin
 Arizona Intel Employees
 ‡ Mr. Thomas O. Arnesen
 Lori Arnet
 Akankshi Arora
 Payal Arora
 Mark Arrieta
 Arthrex California Tech
 Arts & Entertainment Networks
 Aspera, Inc.
 Associated Students UCSB
 Anne Astorino
 ‡ AT&T Community Giving Program
 ‡ Mrs. Elizabeth Potter Atkins
 Mr. and Mrs. Robert Atwater
 AugustOne Foundation
 Michael Augustyn
 ‡ Ms. Nancy L. Avila
 Jennifer Ayers
 Glenn Bacheller
 Bacon Academy
 Mr. Joseph Badaracco
 ‡ Ms. Bernadette Bagley
 Toshiko Bahr
 Mr. Elliot D. Baker
 Mr. Joe Baldwin
 Mr. and Mrs. Richard C. Banks
 Mr. and Mrs. Hancock M. Banning, III
 Mr. and Mrs. Gustav K. Barkett
 Mr. and Mrs. Larry Barrett
 Ms. Pascale Bassan
 Mr. Joe Bassett
 Larry Bassett
 Margaret Batten
 Christian Bauer
 Mr. and Mrs. Leonard Bazzani
 The Douglas C. Beaton Family
 Foundation
 Timothy Beaulac
 Mr. and Mrs. Jerry W. Beaver
 Dino Becovic
 ‡ Mr. and Mrs. Dennis E. Beebe
 Mr. John D. Beggs
 Mr. and Mrs. Donald K. Bennett
 Bergen County Board of Social Services
 Mrs. Leslie Bernstein
 ‡ Ms. Maryellen Bess
 ‡ Mr. and Mrs. Roger J. Best
 Michael Betancourt
 Mr. Marc Bickoff
 Nancy Binder
 Mark Binelli
 Mr. and Mrs. Larry D. Bisbee

Mr. William Bither
 ‡ Mr. Edward C. Blanchet
 Phil Blandin
 Mr. and Mrs. Chris Blau
 ‡ Blistex, Inc.
 Wilma and Donald Bloodgood
 BloomReach
 Larry Boardman
 Ms. Elizabeth R. Bobey
 Julee Bode
 Mr. and Mrs. Ronald J. Boehm
 Francis Bogdan
 Christopher Bogle
 Mrs. Kara Bolwell
 Mr. Chris Bonasso
 ‡ Martin Bondy
 Mr. and Mrs. Michael R. Bonsignore
 Anita Boone
 Mrs. Ingrid Bordman
 ‡ Boston Foundation
 Mr. Matthew Bowden
 Mrs. Ariel Bowers and Dr. John Bowers /
 The Bowers Foundation
 Mr. Scott J. Bowman
 Ms. Margaret M. Chou
 Jill Boyce
 ‡ Mr. Alexander B. Brackenridge
 Brackenridge Foundation
 Mrs. Hannah G. Bradley
 Mr. Barry N. Braksick
 Mr. Stephen Bramfitt and
 Ms. Kelly Niland
 Jeffrey Branch
 Jeff Brantley
 Ms. Bobbie Bratz
 Ms. Ada Braun
 Michael Braun
 Jared Brennan
 Bright Funds Foundation
 Mr. and Mrs. Scott Brittingham
 Brockway Properties
 Seema Brodie
 Brookwood Companies
 ‡ Mr. Edward E. Brown
 Jack Brown
 Mr. Neil W. Brown
 Mr. Randall B. Brown
 Mr. Jerry Brownfield
 Edwin Bruno
 Mr. Michael Brzozowski
 Mr. and Mrs. Edward Buchman
 Leslie Buck
 Bruce Budner
 Robert Buonanno
 Mr. and Mrs. Frank E. Burgess
 Burke Community Church
 Ann Burkhardt
 John Burr
 Anne Burris
 Eileen Burton
 Dr. Renee Burton
 Bruce Buscho
 John Bushnell
 Mr. Bart W. Bussink and Ms. Ann H.
 Jenkins
 Mr. and Mrs. Matthew Butcher
 Andrew D. Butcher Family Fund
 ‡ Ms. Cynthia Butehorn
 ‡ Brenda Byers
 Mr. James L. Byron
 Mr. Patrick Cable
 ‡ Mr. and Mrs. Thomas R. Calkins
 Mr. Joseph Camilleri
 Mr. Peter Campbell
 Sally Campbell
 Mr. and Mrs. Jeffrey A. Camuso
 Luigi Canali
 Capodanno Memorial Chapel
 Mr. Henry Carlson
 ‡ Mr. Ian T. Carnathan
 Carpinteria Storage LLC
 Ms. Dorinda M. Carr
 ‡ Mr. and Mrs. John S. Carter
 Nathan Carter
 Charles Carver
 Mr. and Mrs. Larry G. Carver
 Ms. Caroline Catalan
 Joseph Cavaluzzi
 ‡ Mr. and Mrs. James M. Celmayer

‡ indicates donors who have given for 5 or more consecutive years
 * indicates former board members

Raibu Chacko	Mark Dela Cruz	Jason Ferruggia	James Griffin
Mr. Kanwarjeet Chadha	Mr. Richard F. DeLima	Mr. and Mrs. James R. Feutz	Mary Ann Griffin
Mr. Carl Chadsey	‡ Dell Direct Giving Campaign	Robert Fielack	Mr. and Mrs. Brett G. Grimes
Maria Elaine Chalfin	Andres DeLuna	Fields Family Charitable Fund	Catherine Grimes
Mr. Ross Chambers	Ms. Sharon M. Deming	Janet Findley	Grinnell College
Bertrand Chan	‡ Ms. Chu-Yuan S. Deng	First Dollar Foundation	Joseph Grosso
‡ Mr. Yusup Chandra	Mrs. Elizabeth B. Denison / The Denison	Fischer Family Fund	Mr. and Mrs. Irwin Gruverman
Mrs. Jennifer Chang	Family Foundation	Rachel Flamholz	Mr. and Mrs. Dan Gunther
Mr. Tony Chao	Bryce Denney	Sharon Flegal	‡ Ms. Nancy Gunzberg
Joanna Chapin	Mr. and Mrs. Satish Desai	Ms. Jody Fleischer	‡ Dr. Richard Gurtler
‡ Mr. and Mrs. William D. Chapin	Irene Devine	Mr. and Mrs. Steven C. Fleming	‡ Rodrigo Guzman Mosqueda
Chapman University	Mr. Gerritt deVries	‡ Mr. and Mrs. Skip Fletcher	Michael Hager
‡ Ms. Denise S. Chedester and Mr. Kenneth	‡ Diamond Family Medical Clinic	Mr. and Mrs. William A. Fletcher	‡ Mr. Soo Hahn
Hughes	Mr. Michael Dickinson	Ms. Crystal Flores	Kathleen Haiker
Dr. Robert S. Chernack	Ms. Kathleen P. Dillon and Mr. Edward	Dustin Foelber	Ms. Janice C. Hale
Children's Health Council	Coleman	Julian Fong	Deborah Hall
Brock Childs	‡ Dr. and Mrs. Steven F. Dingle	Mr. and Mrs. F. William Forden	‡ Ms. Melissa Hamilton
Chinaberry, Inc.	DIRECTV Group, Inc.	Mr. and Mrs. Keith J. Forster	Mr. and Mrs. Robert J. Hamilton
Ms. Anna Chiu	‡ Tim Dittmann	‡ Mr. and Mrs. Robert B. Foster	‡ Mr. and Mrs. Lawrence T. Hammett
Dennis Chiuten	Ms. Deborah E. Dodge	Ms. Wendy Foster and Mr. Pierre LaFond	Mr. Quentin Hancock
Mr. Vincent Chow	The Donuts	Mrs. Elisabeth A. Fowler	Ms. Lauren Hanson
David Choweller	Ms. Mae Doom	Mr. and Mrs. Michael Frain	Happy Lounge
Ms. Ursula Christie	Mrs. Linda Dorman	Mr. Jesse Frazier	Debra Hargraves
Mr. Benedict Chu	William Dowding	Mr. Richard Freeman	Merrill Harmin
Ed Chung	Mr. Robert Doyle	Mr. and Mrs. Bevan M. French	Mr. David C. Harper
Mark Chung	Robert Draeger	Ms. Francine Freund	Mr. and Mrs. Carrell R. Harrington
Mr. and Mrs. Andrew Clark	Robert Draine	‡ Mr. and Mrs. Bernard Fried	Mr. Peter Harrington and Ms. Dinh Ha
Mr. Fred Clarke	Ms. Linda A. Drake and	Ms. Amy Lee Friedman	Mr. and Mrs. Douglas E. Harris
Mr. and Mrs. Steven Clay Rose	Mr. David B. Van Wyck	‡ Ms. Joanne M. Friedman	Mr. Michael Harris
Mr. and Mrs. John E. Clement	Allan Drazen	Margaret Fruth	Mr. Richard Harrison
Mr. Justin Cline	Ms. Susan Drews	‡ Mr. and Mrs. Terrence J. Fyfe	Mark Hartman
Greg Clites	Drug Plastics & Glass Co.	G. V. W. Inc.	‡ Mr. Eric Hastings
‡ Dr. Steven Clouse	Joseph Dubray	‡ Dr. John Gait	Mr. and Mrs. Jerry Hausman
‡ Ms. Martha Clyde	Ms. Suzanne Duca	‡ Ms. Ruth Galanter	Ms. Joann Hawley
Stephen Coates	Ms. Jane Dudley	Anthony Galka	Holly Hayden
David Colburn	Duffy Charity Trust	Miss Fiorella Gallo	Mr. and Mrs. Ronald A. Hays
Kelly Cole	‡ Ms. Thiele Dunaway	Mr. and Mrs. John F. Gallo	Mr. Simon Hayward
Ms. Rebecca Cole and Mr. Peter Jhon	‡ Ms. Bonnie J. Dunlop	Chee Yong Gan	Mr. and Mrs. Robert C. Hazard
Lynn Collins	Daniel Dunn	‡ Mr. Maheer Gandhavadi	‡ Tom Healey
Combs Family Fund	Mr. James P. Dunn	Ruel Garcia	Healing Hands Chiropractic
Ms. Sherrille J. Compain	Mr. Patrick C. Dunster	Mr. Timothy Gebard	Mr. Sanger C. Hedrick, Jr.
Connelly Family Foundation	Mr. and Mrs. Larry K. Durham	Mr. and Mrs. W. Dodd Geiger	Mr. and Mrs. Howard A. Heffron
John Connolly	Rachel Dworkin	‡ Mr. Bob Gerber and Veronica Rynn, D.C.	Mr. and Mrs. Richard Heimberg
Bruce Conrad	Dylanian Charitable Fund	Mr. Daniel P. Gerken	Ms. Linda Helmandollar
Stelios Constantinides	‡ Ms. Margaret P. Earnshaw	Ms. Inken Gerlach and Mr. Charles R.	Mr. and Mrs. Roy W. Hendrick, Jr.
Mr. and Mrs. Larry Conti	‡ eBay Foundation	Rudd	Mr. Wiley A. Hendrix
Mr. and Mrs. Thomas A. Conway	‡ Ms. Ilana Eden	Mr. David Gewolb	Bruce Hennings
Ms. Carolyn V. Cooper and Mr. Glenn C.	Mr. Norman V. Edmonson	Mr. Jake A. Gheret	Mr. and Mrs. Loren Henry
Griffith	Nancy Edwards	Mr. Allan Ghitteman and Ms. Susan J.	Ms. Susan Herzig
Ms. Margaret Cooper	Ms. Susan Ehrenthal and Ms. Elizabeth	Rose	Mr. and Mrs. Stephen Heuslein
J. David Cope	Wilson	James Gianopolos	Marta Hidalgo
‡ Ms. Patricia Corn	Electronic Arts, Inc.	Elaine Gibson	‡ Priscilla Higgins, Ph.D. and Mr. Roger
Mr. John Corridan	Mr. Ronald Eliason	Mr. David Gilbertz	W. Higgins / Higgins-Trapnell Family
Timothy Cotter	Elkay Companies	Lawrence Gilg	Foundation
Ms. Nancy Cotton	Darren Elliott	‡ Dr. and Mrs. Pritam Gill-Kumar	Mr. Jason A. Hildebrandt
Ms. Helen M. Couclelis	Terry Elliott	‡ Ms. Ann Gilman	Nicholas Hirons
Mr. and Mrs. David A. Coulter	Mr. and Mrs. Jeffrey H. Ellis	‡ Rick Giovinazzo	Mr. and Mrs. James Hirsch
Gradiva Couzin	Selena Ellis	Mr. Darin Glasser	‡ Dr. James M. Hirschberg
John Covert	Isaac Engel	William Gleason	Gregory Hoban
Mr. and Mrs. Bruce P. Crary	Ms. Cathy Enlow	Mr. Paul F. Glenn	Mr. Dominic Hodson
Mr. and Mrs. Gordon B. Crary, Jr.	Mr. and Mrs. Patrick Enthoven	Mr. Kenneth Globus	Steven Hoekman
Joseph Crobak	David Epstein	Mr. Jamie Gluck and Mr. John Wentworth	‡ Mr. and Mrs. C. Brett Hofmann
Kimberly Crocker	Equitable Life & Casualty Insurance	‡ Mr. and Mrs. Ehren Goerland	Mr. and Mrs. Richard K. Hogue
The Sharon Croom Memorial Fund	Company	‡ Dr. Teresa D. Golden	‡ Holborn Corporation
Carlos Cruz	Erco Foundation	Ms. Nancy Field Goldsholl	Mr. and Mrs. George Holbrook, Jr. /
Miss Larissa Cruz	Mr. and Mrs. Donnelly Erdman	Golub Family Foundation	George W. Holbrook, Jr. Foundation
The CSM Foundation	Ericsson	‡ Dr. Jesus J. Gonzales and Dr. Teresa	Nikki Holbrook
John Cummings	Ms. Mary P. Esbjornson	Ferguson-Gonzales	Mr. and Mrs. Lee Holcombe
‡ Mr. Stephen Cummings	Ms. Charlotte E. Eubanks	Mr. Lance Good	Ms. Edith E. Hollister
‡ Jesse E. Czekanski-Moir	‡ Mr. David Evans	Dean Goodless	Hollister Limited
Mr. Alec Dafferner	Douglas Evans	‡ Ms. Ann Goodrich	Cynthia and Robert Holloway
‡ Mr. David E. Dalbo	Kevin Evans	Mr. Lawrence S. Goolsby	Mr. and Mrs. Keith R. Holm
Dancing Tides Foundation	Mr. and Mrs. Terrence M. S. Evens	Usha Gopal and Vijay Kumar	Mr. Jerome Holway
Ms. Hue-Trang T. Dang	‡ Mr. and Mrs. Alan R. Ewalt	Mr. Colin Gordon	‡ Mr. and Mrs. Gary Horowitz
Dr. Stewart Daniels	Mr. and Mrs. Edward G. Ewing	Daniel Gorelick	Hazel Heath Horton Philanthropic Trust
‡ Mr. and Mrs. William P. Danner	Mr. William B. Fagan	Mrs. Sharon Gort	Jim Houghton
Gail Daugherty	Thomas Fagedes	‡ Mr. and Mrs. Christopher P. Gorton	Ms. Michelle M. Hsu
Mr. William Davidge	Martha Falkenberg	John Gottlieb	Wen Hsu
‡ Mr. and Mrs. Joseph K. Davidson	Family Medicine Clinic	‡ Dr. and Mrs. Leonard S. Grabowski	John Hubby
Ms. Diane L. Davison	Caroline Farrell	‡ Mr. Robert E. Grady III	Dr. Dale Hudson
Ms. Gwen Taylor Dawson	‡ Dr. Warren S. Farrell	Robert Graham	Ms. Katherine L. Hufnagel
The Dayton Family Fund	Reyla Faubion	Graham Holdings Matching Gifts Program	Lane and Craig Huggins Family Charitable
‡ Mr. and Mrs. Paul De Bruyn Kops	Mr. and Mrs. Barry J. Fay	Greenbelt Community Church	Foundation
‡ Mr. Edward De Caro and Ms. Ann Sullivan	‡ Dr. Julie Feinsilver	Julie Greenberg	‡ Paul Hughes
Michael De Rosa	The Felsenthal Family Fund	Michael Greenberg	Eric Hull
Suzanne Dean	Mr. Charles C. Fenzi	Mr. Robert Greenberg	Patricia Humphrey
‡ Dr. Shirley E. Dearborn	‡ Mr. and Mrs. James G. Ferguson	GreenbergTraurig	Daniel Hunnell
Ms. Circe Cooke and Mr. David Dehoff	Mr. S. Ferguson	Jonathan Greene	‡ Mr. and Mrs. Neil T. Hunt
Joseph Del Priore	‡ Mr. and Mrs. Terry P. Fernandez	Susana Grice	Mrs. Bobbi Hunter

Ms. Susan Hurst and Mr. Joseph J. Slafkosky
 Farrukh Hussain
 Thomas Hyde
 HzW Environmental Consultants
 I.D.C. Foundation
 Alfiyaz Ibrahim
 Nora Iluri
 Independent Pipe and Supply Corp.
 ‡ Bret Indermill
 Mr. Wendell Ing
 Mrs. Jackie Inskeep
 Insurance Women of Santa Barbara
 ‡ Intuit, Inc.
 ‡ Ms. Lygia M. Ionniu
 ‡ Mrs. Mildred J. Irvine
 Mr. Joseph P. Iser
 ‡ Ms. Chieko Ishii
 Mr. and Mrs. Matthew Ives
 ‡ Mr. Kenneth Jack
 Mr. and Mrs. Jeffrey Jacobs
 ‡ Mr. Akbar R. Jaffer
 Mr. Craig Jaffurs
 Jaffurs Wine Cellars
 Frank F. James
 Tim James
 Srinivas Janardan
 Ajay Jani
 Mr. and Mrs. Joseph E. Jannotta
 Mr. Daniel Janssen
 Mr. and Mrs. Andrew P. Jarrad
 Jeng Family Fund
 Mr. Arthur Jenks
 K. Jennings
 Jim Ryerson Environmental Foundation
 Fund
 Thomas John
 ‡ Ms. Alicia A. Johnson
 ‡ Mr. Ethan S. Johnson
 Roger Johnson
 Mr. and Mrs. Doug Johnstone
 Mr. and Mrs. Henry Jones
 Debra Jordan
 Hal Jordy
 Joy Josephs
 Susanne Jul
 Mr. Douglas Jung
 Mr. Ragu Karmel
 ‡ Dale S. Kammerlohr
 Mr. and Mrs. Gordon Kaplan
 ‡ Mr. and Mrs. Mark Kaplan
 Karim Family Charitable Fund
 Karl Storz Endoscopy-America, Inc.
 Karl Storz Imaging, Inc.
 Mr. and Mrs. Jeffrey N. Katz
 Sammy Katzman
 Charles Kauffman
 John Kaupp
 Shimpei Kawasaki
 John Keairnes
 The Kevin and Masha Keating Family
 Foundation
 Susan Keefer
 Deborah Keegan
 Patricia Keegan
 ‡ Mr. and Mrs. Bernd Keller
 Mr. and Mrs. Tom L. Keller
 Mrs. Barbara Kelley
 Mr. Colin Kelley
 ‡ Mr. Martin B. Kelly
 Mr. and Mrs. Steven P. Kenney
 Mrs. Nancy Kessler
 Nzeera Ketter
 Samson Kim
 Simon Kim
 Dr. Chenery Kinemond
 Mr. Robert N. King
 Mr. and Mrs. James Kingston
 Heidi Kinney
 Katherine Kinsella and Linda Go
 ‡ Ms. Alice E. Kinsman
 Ms. Marjorie Klayman
 Daniel Klein
 Joel Klein
 Joanna Klose

‡ Mr. and Mrs. David L. Kluger
 Carol Kneip
 Alexa Knight
 ‡ John and Sandy Knox-Johnston
 Mr. and Mrs. Peter P. Kobisek
 Robert Kobriger
 ‡ Ms. Andrea K. Kocher
 Mr. Paul Kochis
 John Michael Koelsch
 ‡ Ms. Elizabeth P. Kohn
 Mr. John F. Kokula
 Mr. Larry Koppelman and Mrs. Nancy Walker Koppelman
 Mr. and Mrs. Peter Kornbluth
 KPMG
 Hosanna Krienke
 Mr. and Mrs. Gordy Krischer
 Mr. Kyle Krohn
 Ms. Lori D. Kumar
 L.T. Georgia Mall, Inc.
 David K. La
 Mr. and Mrs. Stan Laband
 Dennis Lacroix
 ‡ Mr. Patrick Lacz
 Zarin Lal
 Mrs. Sherry Lam
 Lam Research Corporation
 Ms. Joanne S. Lampert
 Mr. Frederick H. Landell
 ‡ Mr. Thomas P. Landig
 Patricia Lange
 ‡ Ms. Teresa Lange
 Mr. and Mrs. Mark Lariviere
 Mr. Edward Larmann
 Robert LaRow
 James Larrick
 Mr. John Larse
 George Larson
 ‡ Mr. and Mrs. Rob Laskin
 Mr. and Mrs. J. E. Latin
 The Lau Fund
 ‡ Mr. and Mrs. Eugene J. Lauer
 Hoi Ping Law
 ‡ Mr. and Mrs. Gary E. Lawrence
 Karen Layden
 Rachel Laylo
 Dinh T. Le
 Santiago Leal
 Ms. Caroline Ledebur
 Linda Lee
 Lucas Lee
 Phillip Lee
 Eric Lehmann
 Mr. Tom Leister
 Mr. Erik Leon
 Adam Leonard
 Mr. and Mrs. David LeRoux
 Dr. Barbara Levi and Mr. Ilan Levi
 Ms. Susan Levin
 Charles and Margaret Levin Family
 Foundation
 Alexander Levy
 James Levy
 Mr. Milton C. Lewis, Jr.
 ‡ Mr. and Mrs. G. Seth Leyman
 Pingshan Li
 Jacob Lieb
 Mr. Andrew B. Lim
 Boksoo Lim
 ‡ Sheldon Lim
 Elaine Lin
 Whitney Lincoln
 Mr. Jake Lipton
 Alice Litter
 Mr. Andrew Locke and Mrs. Annie Pham
 Mr. and Mrs. Jacob Locker
 Loeks Family Fund
 ‡ Ms. Jan Looney
 ‡ Mr. James Lovell
 Michael Lowe
 LPL Financial
 Mr. Philip Lucht
 Mr. Laurence G. Lundblade and Ms. Barbara Ruys
 Mr. John M. Lynn

James Lyons
 ‡ The M & M Foundation
 Renan Macandog
 Mr. John A. Magnuson * and Mrs. Dorothy MacCulloch
 Estate of Mary C. MacEwan
 Mr. and Mrs. John Macfarlane
 Sarah Macfarlane
 Florence Magassy
 Mrs. Jo Ann Magstad
 Mr. Donald Mahoney
 Leanne Mahoney
 Jaykumar Maistry
 Mr. and Mrs. Paul Makley
 ‡ Mr. and Mrs. Paul Maleter
 Michael Malixi
 Elise Malmberg
 Kevin Maloney
 ‡ Mr. and Mrs. John B. Mandle
 Mr. and Mrs. Robert E. Manger
 Manger Scout Fund
 ‡ Tony Manion
 Ms. Daniela Manning
 Nathan Manning
 ‡ Dr. and Mrs. Lester Mantell
 Helen Mao
 Joseph Maras
 Michael Marchesi
 Kimberly Marteau
 Ms. Dee A. Martin
 Ms. Karen A. Martin
 Sara Martin
 ‡ Mr. William L. Martin
 ‡ Audrey E. Martinson
 Massachusetts College of Pharmacy and Health Sciences
 ‡ Mr. and Mrs. George L. Matthaei
 Mr. Brett H. Matthews and Ms. Virginia M. Salazar
 The Matthews Salazar Imagitas
 Foundation
 Mr. and Mrs. Mark Mattingly
 Mr. Scott Matz
 ‡ Mr. and Mrs. Peter T. Maxwell
 Jeffrey May
 Adam Mayer
 McBride Family Charitable Fund
 Mr. Michael McCabe
 Toni McCabe
 George McCann
 Catherine McCarthy
 Patricia McDonnell
 Mr. and Mrs. William McGlashan
 Mr. William F. McInerney
 Mr. and Mrs. Doug McKenzie
 Mr. Mitch McKinley
 Ms. Jennifer McMahon
 Dr. and Mrs. Robert M. McMeeking
 Jonathan McMullen
 ‡ Ms. Leeana McNeille
 Mr. Mark C. Mead
 ‡ Mr. John C. Meier
 ‡ Mr. and Mrs. Michael N. Meiser
 Ms. Donna Mellon
 ‡ Mr. and Mrs. Timothy B. Meluch
 Mr. and Mrs. Andrew Menard
 Gregory Mennenga
 Mr. and Mrs. David M. Messick
 ‡ Mr. and Mrs. Richard Meurer
 James Meyer
 Jeffrey Meyer
 Kristina Meyer
 Midland School
 Midwestern University
 Milharmer Associates
 Mr. William G. Millen
 Millennium Pharmaceuticals, Inc.
 ‡ Ms. Barbara Reed Miller
 Donald Miller
 Ross Miller
 ‡ Ms. Clare Miner-McMahon
 Mr. Chandra Mistry
 Patricia McNulty Mitchell
 Mr. and Mrs. Sanjit K. Mitra
 Mark Mittelman
 MK Design Center Inc.
 Carolyn Molthrop
 ‡ Martin J. Morello

Mr. David Morena
 ‡ Morgan Stanley & Co.
 Mr. and Mrs. Anthony Morris
 Mr. Stephen G. Morris
 Ms. Susan Morrow
 Mr. and Mrs. Charles Morse
 Mr. and Mrs. Gary D. Morse
 The Mosaic Company
 Harry Moscovitz
 Samuel Moser
 Mr. J. Vincent Moskatis
 ‡ Motorola Mobility
 Mr. Michael S. Moxness and Ms. Deborah Echt
 Anthony Moy
 Mu Sigma Upsilon Sorority Inc.
 Dr. Luciano Mueller
 Paul Mueller
 Sean Mullen
 ‡ Dr. Carol A. Munch
 Mr. Matt Murphy
 ‡ Mr. and Mrs. T. James Murphy, III
 Debra Murray
 Ms. Kerri E. Murray
 Mr. Gregg Musgrove
 Ira Jay Nadell, Ph.D.
 ‡ Ms. Marian Naretto and Mr. John Sowden
 ‡ Dr. and Mrs. A. E. Keir Nash
 John Nasuti
 Stephen Nathan
 Dr. and Mrs. Brad Naylor
 Ms. Margaret A. Neale and Mr. Alfred Lindahl
 Mr. Michael Neckerman
 Mr. and Mrs. Richard P. Neilson
 Mr. Hugh Neville
 Mr. Jared New
 ‡ New Day Marketing, Ltd.
 New England Biolabs, Inc.
 ‡ Mr. and Mrs. Douglas Newman
 Mr. and Mrs. Jim Newman
 ‡ Mr. Derek Newton
 Newton Burt Charitable Family
 Foundation
 Tan Ngo
 Cat-Hien Nguyen
 Khang Nguyen
 Nicol Investment Company
 John Niemeyer
 Sumant Nigam
 Mr. Robert B. Nims
 B. Nishi
 Dave Noble
 Ms. Anne B. Nock
 Juliette Noh
 Notre Dame School
 Mr. David C. Nuckols
 Ms. April Nunn
 ‡ Ms. Kellie Nussbaum
 Mr. Peter Oaklander
 Erin O'Donohue
 Mr. Lee Oeth
 Ms. Christine O'Hara
 Ellen and Peter Ohlendorf
 Dan O'Leary
 ‡ Mr. and Mrs. Richard Olivias
 Thomas Olson
 ‡ Ms. Alicja Omanska and Mr. Bartlomiej Klusek
 Zain Omar
 Bryant O'Neal
 Mr. and Mrs. Eric Onnen
 Patrick O'Rourke
 Joe and Margo Oshrenko Foundation
 Oskaloosa Community School District
 Mr. and Mrs. Lenny Owens
 Owens & Minor Distribution Inc.
 Mr. and Mrs. Michael Padden-Rubin
 Ms. Jacqueline Page
 The Pajadoro Family Foundation
 Mark Palermo
 ‡ Mr. Adam Palmer
 Meara Pamintuan
 Mr. Christos Papadimitriou
 Scott Papineau
 Paradigm Geophysical
 ‡ Dhaval Parekh

‡ indicates donors who have given for 5 or more consecutive years

* indicates former board members

Latsy Parker
Ms. Mary Carroll Parker
Ms. Barbara Parkman
Harry Parlette
Mr. John Parrish
Mr. John W. Paschall
Mr. Robert Pasteris
Divyesh Patel
Andrew Patton
‡ Thomas Patton
‡ Mr. and Mrs. William C. Paulsen
‡ Mr. and Mrs. Joseph A. Paulucci
Alexander Payne
‡ Mr. and Mrs. Richard J. Pearson
Steven Pearson
‡ Mr. F. Lance Pedriana
Peerless Coffee & Tea
Pegasus Family Foundation
Peking Handicraft, Inc.
Mr. Robert O. Pellissier
‡ Ms. Enid M. Pence
Penguin Group USA
Ms. Ellen Rice Perkins
Dorothy Peterson
Shannon Peterson
‡ Mr. and Mrs. Donald Petroni
‡ Mr. and Mrs. Brent Peus
‡ Mr. John Pew
‡ PG & E Corporation Campaign for the
Community
Hanh Pham
Daryl Phillips
Dr. Linda K. Phillips
Mark E. Pierson
Ms. Linda B. Pines
Ms. Carlen Pinsky
Henry Pio
Margaret Piper
Pitney Bowes Matching Gifts Program
Martin and Lillian Platsko Trust
‡ Mr. Michael Pless and Mrs. Ann Pless
Elizabeth Plummer
‡ Polevoy Family Foundation
Cathy and Al Politowski
Polsky Family Charitable Foundation
‡ Dr. Hjalmar F. Pompe Van Meerdervoort
and Dr. Minie Pompe Van Meerdervoort
Mr. Christopher Pond
Mr. Satyanarayana Ponnuru
Porter Family Trust
‡ Mr. and Mrs. Douglas S. Posson
‡ Mr. and Mrs. Jerry L. Post
Mr. Robert Poulin
Mr. E. Bryson Powell
Stephen Powell
‡ Mr. and Mrs. Alexander M. Power
Annalee Salcedo Power
Mr. Dirk Pranke
Ms. Debra Prekker
Kamal Premaratne
Lisa Preminger
Presbyterian Women in the Synod of S.
California & Hawaii
Presbyterian Women of South Dakota
Mrs. Valerie Prestwood
Prezi, Ind.
‡ Ms. Ruth Priest
Primitives Financial
Primescape Solutions, Inc.
‡ Mr. and Mrs. James Prosser
The Prudential Foundation Matching Gifts
Program
‡ Dr. and Mrs. Hilton Pryce Lewis
Mr. Charles Ptacek
Shirish Puranik
Matthew Quint
Maria Rabin-Go
‡ Oliver Radford
Mr. Charles Raeburn
‡ Mr. Eric Raetz
‡ Mr. and Mrs. Nikith Rai
Mr. Nareshkumar Rajkumar
Neela Ramaswamy
Alix Ramos
Rancho Solano Mothers Guild - Ventura
Rancho Solano PTSA - Greenway
Rancocas Valley Regional High School
Mr. Mitchell A. Rascano
Brian Rasmussen
‡ Raytheon Company, Inc.
Mr. Daren Reavis
Mr. Patrick F. Reen
‡ Matthew P. Reid
Ms. Diane Reiersgard
Ms. Ursula R. Rein
Allen Reitz
Mr. and Mrs. Greg Renker / Renker Family
Trust
Jeanette and Steven Reyner
Eunice Rhee
Ms. Bertina Richter
‡ Mr. and Mrs. Samuel F. Rickard
Mrs. Jane C. Rieffel
Nicholas Riegels
Robert Rifkin
Mr. David Rintels and Ms. Vicki Riskin
Ms. Melissa Riparetti-Stepien
Thelma and Walter Ritchie
Mr. William Rizzi and Ms. Tara Kemter
Brian Robinson
Mr. and Mrs. Cedric J. Robinson
Mr. Joseph Robinson
‡ Mrs. Virginia F. Coke Robinson
‡ Mr. John Roby
‡ Ms. Justine Roddick and Ms. Tina
Schlieske
Christopher Rodriguez
Mr. and Mrs. David B. Roe
Beth Rogers
Rogers Family Foundation
Nathan Roller
Gary Rood
Mr. Leon Roper
Mr. James L. Rosen
Mr. and Mrs. Fred A. Rosenberg
Mr. Lee Rosenberg
Warren Rosenstein
‡ Dr. and Mrs. Ian K. Ross
Ms. Jeanne Ross
Mr. and Mrs. J. Paul Roston
John Rowan
Rowan University
Natalie and Matthew Rowe
Dorothy Rowlett
‡ Mr. and Mrs. Michael Royce
Eric Rubel
Mr. Jeffrey M. Rubenstein
‡ Mr. and Mrs. David Rubin
‡ Mr. Michael J. Runnebohm
Dr. and Mrs. Timothy P. Russell
‡ Mr. Charles W. Ryan
Ms. Christine Ryerson
Mr. Daniel Sable
Ms. Michelle Salas
Sale Family Fund
salesforce.com foundation
Keith Salvata
‡ Mr. and Mrs. Neal Samples
Joan Samson
Bhagwan Samyial
San Diego Community College District
San Nicolaneos of California
Anthony Sanchez
Curtis Sanchez
Valerie and Derek Sanders
‡ Mr. and Mrs. Frank M. Sandy
‡ Mr. and Mrs. John Sanger
Sanguis Winery
Santa Barbara - Puerto Vallarta Sister
Cities Committee
Santa Ynez Valley Rotary Club Foundation
Ms. Barbara Santosusso
Linda Sartori
Linda and Tom Savage
Mr. and Mrs. I. Kenneth Saxon
Mr. and Mrs. Bob Schaffer
Eric Scheid
The Petar Schepanovich* and Kathleen
Schepanovich Trust
Joseph Schmidl
Mr. Ken Schmidt
Neal Schmidt
‡ Mr. Michael G. Schmidtchen and Ms.
Linda F. Thompson
Eric Schmitt
R. C. Schmults
Carol Schneider
Mr. and Mrs. Howard Schneider
Carroll Schoch
Elizabeth Schodek
Eloise M. Schoeppner
Ms. Sandra Schoolfield and Mr. Jon J.
Kechejian
Darin Schoolmeester
Dr. Jeff Schriber
David Schrier
Alicia Schwartz
‡ Mr. Meldir Schwartz
Mr. and Mrs. David J. Scott
Ms. Jessica Seaman
‡ Mr. and Mrs. Dale Seborg
Diana Sedney
SEI Cares Fund
Piali Sengupta
Ms. Andrea C. Serafin
‡ Mr. Anthony Serpa
Sewanhaka High School
William Shack
‡ Mr. and Mrs. Gaurang Shah
‡ Mr. Mukesh J. Shah and Mrs. Parin M.
Shah
Mrs. Nrupa Shah and Mr. Manan Patel
Mr. Umesh Shankar
Mrs. Karen Shapiro
‡ Mr. and Mrs. Skip Shapiro
Mr. Stuart A. Shapiro
Michael Sharratt
‡ Mr. and Mrs. Kirk B. Shastid
Shattuck St. Mary's School
Richard Shaw
Mr. and Mrs. Craig Shelburne
Shell Oil Company
‡ Mrs. Cynthia L. Sherwood-Judd
Mr. Danny Shively
Michael Shoeffitt
Richard Shor
‡ Mr. and Mrs. George Short
Ms. Christine Sibille
David Siffert
The Sikand Foundation
Ms. Anita L. Silver
Nomi Silverman
Edward Simmons
Mr. Charles W. Simon
Mr. Jeffrey Simons / The Jeffrey I. Simons
Charitable Foundation, Inc.
Kathleen Simpson
James Singer
Mr. Gurjot Singh
The SJL Foundation
Beverly and Gerald Slade
Malinda Slagle
Dr. and Mrs. Glen Slater
Ms. Eileen Smiley
‡ Miss Kathleen A. Smith
Ms. Keisha Smith
Mr. and Mrs. Larry Smith
‡ Mr. and Mrs. Marion D. Smith
Ms. Mary H. Smith
Victoria Smith
Mr. and Mrs. Scott Smoot
‡ Mrs. Ashley Parker Snider and Mr. Tim
Snider
Nancy Snowden
Alexandria and James Snyder
Ignacio Solis
Genen Soo-Hoo
Ms. Karen Spaulding
Larry Spears
Joy Spear-Smith
Mr. and Mrs. Patrick Spence
Annette Spendel
Ms. Jan Speth
Spine One
William Spink
St. James Episcopal Church
Mr. Landon Stableford
‡ Mr. Mark Stalzer
Judith and Jack Stapelman
John Staples
Starr Companies.
Tim Steffen
Lance Stewart
Linda Stipes
‡ Mr. John Stocker and Ms. Gayle Chin
Ms. Jill A. Stone and Mr. Kurt Hoglund
Mr. and Mrs. Greg Stoney
Jonathan G. Strand
Mr. Donald W. Strang III
Julie Street
‡ Mr. Ray Stribling
STS Foundation
Carl Sturges
Dr. and Mrs. Jack Stuster
Suez Motel
Ms. Teri Jo Summer and Mr. Dale Reiger
Daniel Sutton
‡ Mr. and Mrs. Christopher Swann
Mr. and Mrs. William Sweeney
Mr. Robert W. Swift
‡ Mr. Wayne D. Symonds
Ms. Cecelia J. Szurszewski
The Lee and Carol Tager Family
Charitable Fund
Mark Tajirna
Alan Talbot
Mr. Jon Tanaka
Ms. Eileen Tangonan
Mr. and Mrs. Richard M. Taniguchi
Mr. Steven M. Taslitz
Mr. Kevin Taube
Mr. James H. Taylor
‡ Mr. and Mrs. Edward Telenick
‡ Mr. and Mrs. Thomas J. Tella II
John Thai
Mr. and Mrs. Stephen Thal
Mr. and Mrs. George Tharakan
Mr. and Mrs. Ray Thomas
Roy Thomas
‡ Dr. Bruce T. Thompson
‡ Mr. James S. Thompson
Ms. Mary D. Thompson
‡ Mr. and Mrs. Robert G. Thompson
‡ Mr. and Mrs. Robert M. Thompson
Mikal Thomsen
Thornapple Kellogg School
Mr. George V. Tiers
‡ Ms. Barbara J. Tigert
Mrs. Elizabeth J. Tilton
‡ Mr. Arthur Tipton
Mr. and Mrs. Christopher Tracy
Tracy Zweig Associates
Mr. and Mrs. G. Traller
Abhishek Tripathi
Mr. Mark Tripp
Ed Trissel
‡ Mr. James W. Trowbridge
Susan Trukawinski
‡ Ms. Shirley Tuan
‡ Mr. and Mrs. Kenneth W. Tucker
The Tulgey Wood Foundation
Mr. George B. Turpin, Jr.
UBS Matching Gift Program
Tony Uccello
Mr. Stan A. Ullman and Ms. Diane C.
Narhi
Ramat Ulung
Mirelle Underwood
‡ Union Congregational Church
The Unitarian Society of Santa Barbara
United Way Greater Twin Cities
United Way of Albuquerque
United Way of the Bay Area
Thomas Upton
USAA Investments - Disbursement
Aleeta Van Petten
Mr. Rick Van Rossem
‡ Mr. John Vander Mause
Mr. and Mrs. Matthew D. VanGundy
Mr. and Mrs. Stephen W. Vaughan
Ms. Lee T. Venolia and Mr. John W.
Thoman
Jing Vida
Mr. Adam Vidoni
Mr. Benedict Viglietta
Vitantonio Foundation
Thien Vo
Mr. Matthew B. Vogel
Franklin Vu
W. A. O'Leary & Sons Inc.
Benjamin Wagor
Anna Walker

Robin Walker
Mr. Warren Wall
Kaitlin Walsh
Wanaque Board of Education
Paula Wardynski
Mr. and Mrs. Stephen P. Waterman
The Waterman Foundation
Mr. William P. Wathen and Ms. Becky Barieau
Darla Watkins
Mrs. Doodie Watling
Mr. Richard M. Waugh
Mr. and Mrs. Nicholas N. Weber
Lisa Weier
Mr. Gregory B. Weis and Mrs. Barbara Rystrom
‡ Steve Weisbart
‡ Mr. and Mrs. Robert E. Weiss
‡ Mr. John Wells
Wells Fargo Foundation
Wells Fargo Wealth Management
Westlake Village
‡ Mr. and Mrs. John H. Werden
Westminster Catawba Christian School
Michael Whalen
Whatley Foundation
Ronald Wheeler
Mr. and Mrs. Gary Wheelock
Mr. Charles White
‡ Mr. and Mrs. Kevin D. White
Leslie White
Mr. Tad Whiteside
‡ Mr. and Mrs. Charles W. Whiting
‡ Mita Wickham
Era Mae Wieand
Aaron Wielenberg
‡ Mr. Dulnath Wijayratne
Mary Wiley
Mrs. Nancy D. Wilkinson
‡ Mr. and Mrs. Evan S. Williams, Jr.
Robert and Tracey Williams
Ms. Valerie Williams
William Williams
‡ The Willits Foundation
Chris Wilson
Mr. Daniel Wilson
‡ Mr. and Mrs. Dennis Wilson
Dr. and Mrs. John P. Wilson
‡ Mr. and Mrs. Peter K. Wilson
Windsor Gardens Convalescent Hospital of Los Angeles
Doris Winebrenner
Dean Wingerchuk
Mrs. Dorothy D. Winkey
Mr. and Mrs. Gordon Winkler
‡ Ms. Alice Wiseman
Anita and Gerald Wiseman
Mr. William Wissler
Maureen Witt
‡ Mr. and Mrs. Peter M. Wolcott
‡ Sonja Wong
Mr. Mason Woo
Mrs. Barbara J. Wood
Mr. Kurt Woodland
Michael L. Woolley
‡ Dr. and Mrs. Alan Wortman
Steve Wrede
‡ Mr. and Mrs. Terry P. Wright
‡ Yahoo! Matching Gifts Program
Ms. Elizabeth C. Yancey
Johnnie Yang
Leonard Yang
Jason Yankowski
Mr. Bobby Yao
Ms. Bethanne Yeager
Mr. and Mrs. Frederick J. Yeager
Yelp Foundation
Yerkes Family Foundation
Dr. Bernice Yeung and Dr. Balam A. Willemssen-Cortes
Glendy Yeung
‡ Mr. and Mrs. Don Ylvisaker
Mr. C. S. Young
Dr.Carolynn Young
James Young

Mr. and Mrs. P. Gerhardt Zacher
Susan Zerner
Zeta Associates
Mr. David Zhang
Nico Ziguoras
Daniel Zilberman
Jon L. Zimmerman
‡ Ms. Kimberly Zimmerman
‡ Ms. Birge K. Zimmermann and Mr. Kenneth R. Goodearl
‡ Dr. and Mrs. Tuenis D. Zondag

\$500 +

Eric Abadir
Edward Abate
‡ Mr. and Mrs. Peter K. Abbey
Lisbi Abraham
Laurence Abramson
Mark Abramson
ACO Furniture
Dennis Adler
Ms. Florence Adler
Will Aitchison
Sami Al-Bashir
Mark Albert
Brooke Alberts
Jeff Alevy
Mr. and Mrs. Gregg Alex
Ms. Henrietta Alexander
Ali Alhareth
Mr. and Mrs. William H. Allaway
Cat Allday
Frances Allen
Mr. Stephen Allen
Ms. Marigene B. Allison
Stephen Alpert
Alpha Phi Omega - Alpha Rho
Adam Altkin
Altschul Family Fund
Amazon Smile Foundation
Marsha and Dick Ambrose
Michel Ambrosino
Devendra Amin
Zafar Amin
‡ Ms. Marilyn E. Amling
Teresa Amott
‡ Mr. Robert D. Anderson
Mrs. Maria Andrew
Mike Ang
Mr. Tun Loon Ang
Philippa Angelides
The Romuald Anthony and Barbara R. Anthony Revocable Trust
APEX Learning, Inc.
APS/APSolutions LLC
M. D. Archibald
Casey Arends
Emmanuel Arguelles
Mr. Anthony Armstead
‡ Dr. G. William Arnett and Mrs. Sally A. Warner-Arnett
‡ Mr. and Mrs. Ronald R. Arnold
Raman Arora
Erin Ashcroft
Ms. Florence W. Asher
Mr. Aneel Ashrani
Mr. Gary Aspelin
Ara Astourian
Athletico
Atlantic Contracting & Specialties LLC
Mr. Robert Au
Andrew Aversa
Yalcin and Bahar Ayasli
Dr. David and Mrs. Meredith Babbott
Ms. Sandra Babylon
Elizabeth Bacot-Aigner
Mr. Richard Bader and Ms. Catherine Morris
Glenn Bailey
Mrs. Marjorie L. Bailey
Marc Bailie
Kurt Baker
Ms. Margaret A. Baker
‡ Mrs. Virginia H. Baker
Louann Ball

Ms. Joan Bancroft
Ms. Maureen C. Barber
‡ Mr. and Mrs. Richard H. Barden
Mr. Jack Barengoltz
Mr. and Mrs. Steven Barger
Mr. Michael Barish
Susan Baroni
Mr. Leon P. Bartholomew
Gerald Bartolomucci
Carolyn Batt
‡ Mr. and Mrs. Richard Battles
Mr. Dave Bauman
Mary Ann Bautista
BCCDowntown LLC
David Beal
Ms. Traci Bean
Mr. Jack Bechtel
‡ Tim Bechtel
George R. Becker
Ms. Margie Becker-Lewin
Mr. Robert J. Becnel
‡ Mr. and Mrs. John C. Bedford
Mr. and Mrs. Steven V. Beer
Andrea Beesley
David Beggs
Kasey Bell
Mr. Peter Bell and Ms. Sharon Bottorff
Ms. Erica Bender
D. Bender-Farquharson
Mr. Howard Bendetson
Mr. and Mrs. J. D. Benisek
David Bennett
Mr. and Mrs. Donald K. Bennett
Ms. Julia Lorber Benson
‡ Mr. Brian Bergamaschi and Mrs. Ann Russell
Mr. and Mrs. Kenneth W. Berger
Mr. and Mrs. David Berklich
David Bernal
Ms. Linda M. Bernson
Mr. and Mrs. Andrew Berwick
Richard Besser
Betsy Ross Elementary
Margaret Beyer
Dr. Neil Bhayani
Bickett Family Foundation
‡ Mrs. Birgit Bielitzer
Peggy Bierer
Bill Heller Photo
Ramona Binci
Ms. Marilynne R. Bird
Randy A. Birken
Irma and Michael Bishay
Beatrice Blacklow
‡ Mr. and Mrs. Kenneth J. Blain
‡ Mr. and Mrs. John A. Blair
Antoinette Blanchette
Terry G. Blanken and Dennis P. Swartzlander
Ms. Victoria H. Blatter
Fred Blau
Ms. Kenlyn Blecker
‡ Mr. and Mrs. Robert L. Bletcher
‡ Alexander G. Bliss
John Boettner
Roberto Bolandrina
M. Colleen Bonar
Christopher Boner
Ms. April J. Boney and Mr. Rogelio Drenning
Michael Boord
Bradley Booth
Ms. Ann Borer
Mr. and Mrs. Timothy P. Boris
‡ Mr. Joseph Boris, Jr.
Ms. Meriko Borogove
Richard Bourne
Mr. and Mrs. Michael T. Bowers
Stephanie Box
David Boyarski
Joshua Bracerros
Mr. and Mrs. Wymond W. Bradbury
‡ Mr. Kevin Bradley
‡ Mr. George R. Bradley, III
Roger Brady
Mr. John N. Brady
Stephen Brainard
Laura Brake

BRD Foundation
Mr. Royce T. Breazeale
Carolyn Breit
Camillia Brennan
Mr. and Mrs. Francis Brewer, Jr.
Mr. Rupal Brich
Mr. Daniel G. Brick
Robert Briggs
Parker Bright
Mrs. Judith C. Bringard
Ms. Cindy Brittain
Matthew Broderick
Mrs. Isobel S. Bromiley
Robert Brook
Russel Brooks
Mr. and Mrs. Allan Brown
Malcolm Brown
Mr. and Mrs. Timothy R. Brown
Mr. J. B. Brown
Ms. Robin Browne
William Browning
Sheila Brudno
‡ Dr. and Mrs. Bob Bryant
Torsten Brzezinski
Clarisse Bucag
Ms. Mary Bucholtz and Mr. Jon McCammond
Ms. Susan Buckley
Mr. James Buckley and Ms. Patricia Kelley
Linda Buday
Jerry Budin
Ms. Pamela Budkovich
‡ Kate Buenau
Doug Buettner
Don Bui
Matt Buk
‡ Mrs. Julie A. Burdette
Maria A. Burke
Ms. Barbara Burket
‡ Mr. Stephen Burnett
Mr. Andrew Burnham
William Burns
Burrell Family Charitable Fund
‡ William S. Burtness
Kieran Bustamante
Mr. Tarun Butaney
Elizabeth and Richard Butler
Warren Butzen
Ms. Alicia Byrnes
Eric Byrom
Calypso St. Barth, Inc.
‡ Mr. Richard L. Campagna
Charles Campagne
Mr. and Mrs. Colin J. Campbell
‡ Mr. and Mrs. Louis S. Cannon
‡ Mr. Rowel L. Cannu
Elizabeth Capifali
Judith Carlen
Carlitos & Co.
Leah Carlson
Mr. Stephen Carmona
Mr. Robert D. Carraway
Maria Carreon
Mr. and Mrs. Joseph L. Carroll
Rachael Carroll
Mrs. Veronica Carroll
‡ Ms. Linda Carson
Theresa Carter
Mr. and Mrs. R. Wesley Carter
Joshua Carter
‡ Mr. and Mrs. Timothy P. Casey
Mr. Richard Cassata
‡ Mr. and Mrs. Grant Castleberg
Mary Castor
Catholic Daughters of the Americas
Vikki Cavalletto
Brian Cearnal
Marie Cecil
Cera Products Inc.
Virginia Cerar
Walailuk Chaiyarat
Narasimha Challa
William Chamberlain
Mr. and Mrs. Dave Chambers
Mr. Stephen Champion
‡ Mrs. Marjorie Chaney
Daniel Chang
Ms. Yuchiao Chang

‡ indicates donors who have given for 5 or more consecutive years
* indicates former board members

Mr. and Mrs. Steven R. Charles
Yuen Chee
Kimberley Chen
‡ Mr. T. Michael Chen
Hao Cheong
Child Health Foundation
Tae Choe
Ronald Choi
Henry Chou
Valby Chow
Mr. and Mrs. Robert N. Christian
Sally Christiansen
Mr. John Christopherson
Chung-Cheng Chuang
Church of the Foothills
Mr. and Mrs. Robert M. Cibull
Jami and Davor Cih
‡ Mr. Michael Cleary
Cliffside Park High School
‡ Ms. Suzanne Cloutier
Jason Co
Carter Co
Coast 2 Coast Collection
Ms. Andrea Cochran
Donald Cody
Jonathan Cohen
Mr. Andrew Cohen
Mr. and Mrs. Joseph L. Cole
Russell Coleman
College Association at Delhi
Mr. and Mrs. Jess M. Collen
Ms. Margaret Collier
Mrs. Judith Collins
Mr. Robert S. Colman
Ms. Alice Colwell
Ms. Susan Colwell
Community Foundation for Palm Beach
and Martin Counties
Community Shares of Colorado
Computing Research Association
Stephen Condon
Bradford Cone
Mr. Christopher R. Conte
Danielle Cooley
Jeffery Cooney
‡ Mr. John Coplin and Ms. Deirdre A. Stites
Karen Corbid
‡ Mr. Matthew Corpos
Alvin Cortez
Mr. and Mrs. Frank J. Cosenza
Brett Coup
Susan Coursen
Mr. Columbus B. Courson
Mrs. Pearl M. Courson
‡ Covidien
John Cowden
Lillian Cox-Richard
Mr. Mark Craig
Mr. Philip Craig
Crane Country Day School
Mr. and Mrs. Robert P. Creery
Sarah Creighton
Lynn Crystal
Mrs. Kacey Cubine
David Culbertson
Adrienne Cummins
Ms. Lynda D. Curtis
Kirsten Cutler
‡ Mr. George B. Czerw
Edward Dageforde
Mr. Tim Dall
Paulette Dalpes
Pamela Damsky
Ms. Ann Daniels
Barbara Dannenbring
Tu Dao
Daughters of Union Veterans of Civil War
- Tent 22
‡ Mr. Robert Dautch
‡ Ms. Barb D'Autrechy
Mr. Eric Davis
Adalia Davis
Janice Davis
Jolle Davis
‡ Mrs. Katherine Dawson
Raj De Datta
‡ Mr. Anthony De La Cruz
Victoria De Leon
‡ Mr. and Mrs. Louis P. DeAngelis
‡ Deckers Outdoor Corporation
Ms. Lorraine Degerdon
Mr. and Mrs. John DeGroot
Marisela Desormeaux
Ms. Nicole Dettmann-Quisbert and Mr.
Rene Quisbert-Aguirre
Barbara Devaney
Development Management Associates
LLC
Mr. John Diamond
‡ Dr. A. R. Diamond
David Dias
Ms. Nancy Dick
‡ Mr. and Mrs. Glen P. Dickson
Ms. Carolyn Dille and Mr. Dirk Walvis
Mr. Andrew R. Dingwall and Ms. Katherine
M. Fiore
Ms. Lois Dirkes
Brue Disend
Ms. Jennifer Dizon
‡ Mr. Jason Dodge
Catherine Doehring
Julie Doerr
‡ Ms. Doris Dohn
Dolby Laboratories, Inc.
Ms. Elizabeth Dolliver
Mr. and Mrs. Stephen Dombek
Mr. and Mrs. Michael Donahue
Kimberley Donald
Dewey Donihoo
Mr. Richard Doolittle
Rachael Dorman
‡ Mr. Gary J. Dorman
Esther Dornin
Mrs. Connie Doty
Mr. Charles Downer
‡ Mr. William Downing
‡ Mr. and Mrs. William Dreschel
Mr. Leland G. Dribin
Francis Drummond
Antonio D'Souza
‡ Mr. and Mrs. Donald Dubay
Cynthia Duerr
Mr. and Mrs. Robert Duley
Ms. Janet Larson Dunbar and Mr. Alex N.
Pananides
Mary Duncan
Colleen Dunn
‡ Ms. Elizabeth Dupuis
‡ Mr. Rodney M. Durham
Ms. Ma C. Ebro
P. Eck
Melanie Eclar
‡ Ms. Lauretta Edlund
‡ Mr. and Mrs. Selden R. Edner
Mr. and Mrs. Selden S. Edwards
‡ Mr. and Mrs. Eldon R. Edwards
‡ Dr. and Mrs. Frederick D. Edwards
Paul Egert
The Ehelebe Family Fund
Harold Einbinder
Katrin Eismann
El Camino Junior High School
Ms. Marjorie Elkin
Mr. Michael S. Elliston
Robert W. Ellsworth
Kristina Elseth
Paul Elseth
Ms. Jacqueline C. Elsner
Ms. Julia C. Emerson
Ms. Ann Emmanuel
Jessica Empestan
Mr. and Mrs. Rich Eng
‡ James D. Engel, Ph.D. and Ms. Kim C. Lim
Ms. Artimese Epps
Jackie and Aaron Epstein
Rick Epting
Ernst & Young Foundation
‡ Mr. Isaac Erskine
Paula Estes
Dennis Evander
April Evans
Expedia
‡ Mr. Eyjolfur Eyfells
Ms. Barbara Ann Faessel
Synthia Fagen
‡ Mr. Lian Fang and Mrs. Hueiyun Lin
Fannie Mae Company
Judith Faulkner
Richard Fay
Mr. and Mrs. Robert M. Fell
Mr. Steve Fennell and Mrs. Susan
Thompson
Ms. Melissa Ferguson
‡ Ms. Susan Ferguson
John Field
‡ Ms. Leonore Field
Mr. and Mrs. Stephan M. Fierro
Julio Figueroa
Mr. Tobin Finley
Mr. and Mrs. Jim Fiolek
Jeffrey Fishman
Mr. and Mrs. Jim Fitzhugh
Dr. and Mrs. Michael Fleege
Carolyn Flemming
‡ Mr. Ryan Flynn
Myriam and Joel Fontaine
Violet Foo
Timothy Ford
Ms. Linda F. Forkasdi and Ms. Joyce J.
Young
Ms. Susan Forkush
Mr. Maury B. Forman
Joan Foster
‡ Mr. Robert A. Foster
Ajay Francis
Nick Francis
Linda Frank
Frank I. Rounds Company
Franklin Templeton Investments
Ms. Dawn Fredrikson
Mr. and Mrs. Len Freedman
Nancy Friedman
Walker Frost
Mr. Alex H. Fukui
‡ Vince Gabor
‡ Mr. and Mrs. Hewson Gadsby
‡ Ms. Dale Ann Gage
Gaia Energy Systems
Mr. Jay Gaines
Ms. Patricia Gainey
Neil Gako
Frank Galeno
Diane and Ian Galleher
Emily Gallo
Mr. Glenn Gallop
Monica Galloway
Lynn Gamble
Gameboi LLC
Claudia Ganz
Christian Garcia
Fay Garciano
Alejandro Garfio
Ms. Janet A. Garufis
Doug Gathmann
David Gebben
Mr. Robert P. Gendron
Roberta George
Katherine Gerba
Mrs. Marilyn Gevitz
Dana Gherardi
Janine Gianfredi
Alexandros Giannou
Mr. Daniel Gibbings
Thomas Giefer
Mrs. Anna Gillespie
Mr. Daniel D. Gillett
Jack Gindi
Mr. and Mrs. Philip J. Glassanos
Mr. and Mrs. Jeffrey L. Glassman
‡ Mr. and Mrs. Lawrence R. Glenn
Glenn Lukos Associates
Leland Gleysteen
‡ Ms. Diana R. Glimm
‡ Mr. Alexander Globa and Mrs. Patricia
Griffin Globa
Gloucester County College
‡ Ms. Karlene Goff
Jaspaul Gogia
Jonathan R. Goldman
‡ Mr. and Mrs. Sidney Goldstien
Mr. David Golembeski
Mr. and Mrs. Bryan Goligoski
Jason Gonzales
Mr. and Mrs. W. D. Gordean
‡ Mr. and Mrs. Donald Gordon
‡ Mr. and Mrs. William L. Gordon
Mr. and Mrs. Geoffrey A. Gothro
Dr. Marshall Gottsegen
Barbara Goward
‡ Probir Goyal
Nicholas Grad
Nicole Graffis
Kristen Graham
Ms. Prasanna Grandhi
Mr. James Grass
Ms. Joy Graustark
Mr. James Gray and Mr. Charles
Conseylea
Mr. Paul A. Graziano
Blanca Green
Clinton Green
Dr. Jacqueline Green
Jerome Greenberg
Timothy Greenhalgh
Greenlight Foundation
Mr. Paul Greenspan
Asha Greer
Mr. and Mrs. Randall Greer
‡ Mr. and Mrs. Erik Gregersen
Mr. Lawrence B. Gregory
Mr. and Mrs. Donald R. Grody
‡ Mr. Neil D. Grossman
Dr. Kevin Gunderson
Kathy Gunning
Kat Gutgsell
Allen Gutheim
Marie Guttas
Ms. Barbara Hage and Mr. James
Aitcheson
Eric Hagemann
Setareh Hagen
Mr. and Mrs. George Hagerman
James Hagood
Mr. and Mrs. John W. Hagood
‡ Mr. Richard Hain
‡ Mr. Amit Halder
Adam Hallman
Ms. Laila Halsteen
‡ Colonel and Mrs. Lewis H. Ham, Jr.
Gail and Ben Hamblin
James A. Hamilton
Ms. Sandra J. Hammond
Kijoon Han
Philip Handel
Mr. David M. Handelman
Josh Hanks
Clint Hansen
Adriel Harari
‡ Mr. Jeff Hardin
Cynthia Hardy
Mr. Dean Harig
William Harris
Mr. Walter F. Harrison
Ms. Valerie Harrison
Mr. and Mrs. Houston Harte
Mr. Peter H. Hartline and Ms. Rebecca B.
Kucera
‡ Dr. Daniel Hartmann
Michael Harvey
Christopher Harwood
Julie Hastings
Ms. Elizabeth Hastings
Carol Hatch
Gary Haver
‡ Ms. Sue Hawes
Mr. and Mrs. Edgar H. Hayes
Philip Haynes
Ms. Christiane Hayward
Charles Heaps
Deirdre Heatwole
Ray Hebert
‡ Mr. and Mrs. Jeffrey Hecht
Nancy Heck
June Heilman
Helen and Bob Bodington Fund
Ms. Susan Hellenbrand
Donna and Larry Henderson
Mr. and Mrs. J. C. Henry
Henry Schein, Inc.
‡ Mr. Samuel D. Herod
Mrs. Eve Hershkovitz
Philip Hess

Mr. and Mrs. Paul Hetzel	Andrew Kamin-Lyndgaard	Douglas Leamon	Jeremy Matias
Thomas Hicks	Srividya Kamisetty	Mr. and Mrs. Robert Lee	Jill Matta
Ms. Kay Higgins	Mr. Greg Kaplan	John Lee	Dr. Donald Mattison
Ms. Mimi Hildbrand	Maya Kapoor	Douglas Lee	Peter Matton
Adrienne Hill	Susan Karnesky	Mr. and Mrs. Yuan Y. Lee	Gordon Mattox
Steven Hill	Mr. and Mrs. Ali Kasikli	† Jacquelyn J. Legg Memorial Trust	Mrs. Patricia Maxim
Mr. Charles Hill	Mr. William J. Kattula	Matthew Leibowitz	Carol L. Maxon
Ms. Linda Himberger	Aasif Kazi	Mr. and Mrs. Daniel Lender	Mr. Philip E. F. Mayes
† Ms. Yvonne A. Hindmarsh	Ms. Beverly Kearney	Tony Leong	Rosemary Mazzo
Jonathan Hironaga	Tom Kearns	Robert Lesniak	† Kathleen and Bruce McBroom
Dr. Laurence Hirsch	† Mr. Brian Keating	† Marilyn and Lawrence Levy	Ms. Pamela McCain
Mr. and Mrs. Peter Hitler	Saarin Keck	† Mr. and Mrs. David Levy	† Mr. and Mrs. J. Daniel McCammon
† Mr. and Mrs. Dennis A. Hobbs	Ms. Sharon P. Keigher	Mr. Evan Lewandowski	Cristina McCann
Ms. Elizabeth Hochman	Timothy Kelly	Patricia Lewis	Truman McCarter
† Mr. Steve Hochman	Jeffrey Kelly	Drew Lewis	† Mr. George J. McCartney
Mr. David Hoffman	Mr. Kevin Kelly	Liberty Mutual	Thomas McClellan
Ms. Sherry Hogan	Mr. Hugh Kelly and Ms. Katya Bloom	Oren Lieber	Daniel McCormish
† Mr. and Mrs. Thomas W. Holcombe	† Ms. Kathryn Kelly	Bennett Lieberman	Mr. and Mrs. Scott McCormick, Jr.
† Tom and Jody Dolan Holehouse	Mr. Joseph Kennedy	Susan Light	Bruce McCreary
Thomas Holevinski	† Dr. and Mrs. John H. Kennedy	Almerick Lim	Marc McDermid
Frederick O. Holley, M.D. and Ms. Maud W. Gleason	† Mr. Len Kettleborough	Riza Lim-Pham	Barbara McDonald
Anne Holmes	Steven Kheloussi	Taiwei Lin	Michael McFadden
Mr. and Mrs. William Holzer	Marc Khouzami	Lincoln Medical & Mental Health Center - Islamic Community	Ronald McFarland
Philip Holzman	Angie and William Kiker	Lincoln Rotary Club Foundation	Ms. Catherine McGivney
Timothy Hoops	Ms. Elizabeth Killion	Margaret Lincourt	Kathleen McGrath
† Mr. and Mrs. Carl Hopkins	Eunice Kim	Ms. Sarah Jane Lind	McGraw Hill Education
Mrs. Rachele Houck	† Mrs. Eun Ju Kim	LinkedIn Matching Gifts Program	Mr. Maurie McGuire
Mr. William P. Howard and Ms. Cindy Pitzer	Walter King	† Kenneth Lipson	Kathleen McHugh
Mr. and Mrs. Jerry Howe	† Ms. Mary J. Kirkland	Mr. Jason List	Tamara McHugh
Ms. Penny Howland	Mr. and Mrs. Steven Kiss	Mrs. Lili Lo	Mr. and Mrs. Scott McIntyre
Melissa and Paul Hsu	Frank Klapperich	Mr. Richard R. Lobdill	Morgen McLaughlin
Helen Hu	Kent Klavens	Mr. and Mrs. Michael Lodato	Thomas McLoughlin
Eileen Huang	Moritz Klein	Dr. William A. Loe and Dr. Catherine L. Loe	Mr. Scott E. McNulty
Mr. and Mrs. Jason Hughes	Mr. Thomas B. Klein	Ms. Linda Logan	Ms. Jane W. McQuade
Grant Hulbert	Ms. Noreen M. Klein	Adrienne Long	Mrs. Kristin McWilliams
Theresa Hultin	† Mr. Steven Kleinman	† Mr. and Mrs. William L. Longley	William Meader
Mr. Robert T. Huning	Mr. and Mrs. Noah J. Knauf	† Ms. Kathleen M. Longo and Mr. Kevin R. Vitale	Leora Mechanic
Mr. and Mrs. David Hunter IV	Mr. Helmut Knehr	Mr. Derek Loranger	Melissa Medina-Rojan
Jim Hurley	Peter Knieps	Mr. and Mrs. Alan B. Lord	Mr. Christopher Meersman
† Mr. Fakhruddin Hussain	Michelle Knight	Los Olivos Rotary Club Foundation	Robert Meidel
Kathy Icenogle	Dana Knobloch	Preston Lotz	Rodrigo Mejia
Joyce Illig	† Mr. Joseph Knutson	Ivan Louey	Helen Melada
Mr. Carl R. Illig	Kenneth Ko	Mr. and Mrs. Don K. Louie	Mr. and Mrs. Arthur Merovick
Mr. Jayson Ingram	† Mr. and Mrs. Jeffrey S. Kochel	Margaret Love	Mr. and Mrs. Richard G. Messmore
Kirk Inocencio	Carl Kocher	John Lowry	Gale Metcalf
Mr. Jeffrey T. Irelan	Mr. John P. Koeqler	Chehao Lu	† Mr. Michael Metzger and Ms. Chikako Nakandakari
Mr. Steven C. Irwin	Mr. Daniel J. Kois	Mr. Justin Lubatkin	Theo Meyer
Mr. David Isaacson	† Mr. Martin D. Koosed	Thomas Luce	Mr. Thomas Meyer
Island Pacific Academy, Inc.	Ms. Barbara C. Koutnik and Mr. Melbourne Smith	Mr. Mark Luesse	† Mr. Robert G. Meyer and Dr. Kathleen Harner
Megan Jackson	Mr. and Mrs. Howard Kozinn	Mr. and Mrs. Kin Luk	Nicky Mezzina
Mr. Erik Jacobson	Mr. Daniel Krol	Amy Lunstrum	Mark Miceli
Marion Jamieson	Roko Kruze	John Lynch	† Ms. Janet G. Michaels
† Mrs. Vijaya Jammalamadaka and Dr. Sreenivasa Rao	† Mr. Wayne Kubick	Mr. and Mrs. Richard Lynch-Corry	Mrs. Susan M. Mihora-Scholl
Von Jansma	Daniel Kuljian	Robert Lynne	† Mr. and Mrs. Frank B. Miles
Michael Jarett	Mr. Rahul Kumar	Karen Lyons	Mr. Ed Miller
Mr. and Mrs. David Jauquet	J. Kumarjagadish	Mr. Levi Maaia	Julia Miller
Mr. Donald T. Jenkins	Mr. Kai Kuo	John Mace	Ms. Diane Miller
Mrs. Barbara A. Jennings	Jordanna Kwok	† Mr. Philip MacFarlane	Lisa Miller
Gary Jensen	Megan Lachi	Mr. and Mrs. Thomas Mack	Amy Miller
Catherine Jerskey	Ms. Judith Lafaver	Matthew Mackall	Vivian Miller
Christopher Joe	Laguna Blanca School	Claudia Mackey	Nan Miller
Geralyn Johnson	Jason Lai	Alain Macklovitch	† Ms. Frances M. Miller
Lester Johnson	Arif Lakhani	Ms. Marion MacNeil	† Mr. Michael Miller
Mr. Ernst W. Johnson III	Mr. and Mrs. Robert W. Lambeck	Ravindranath Madasu	† Mr. Derek Milligan
Mr. Kyle Johnson	Patrick Lane	Dr. Trieu Mai	Mr. and Mrs. David J. Mills
Terry Johnson	† Peter Lane	Mr. and Mrs. Peter Maier	Andrew Minden
† Mr. and Mrs. Brian Johnson	Mr. and Mrs. Robert G. Langevin	Majidi Inc.	Mr. Tony A. Misch and Ms. Victoria Scott
† Mr. Joseph W. Johnson	Mr. Bryan Largay	Diane Makuc	Ajay Mistry
† Mr. and Mrs. Gregory M. Johnson	Kim Largen	Dr. Vinod Malhotra	Mark Mitchell
† Mr. and Mrs. Craig Johnson	Mr. Steven K. Larson	Shubhang Mani	† Mr. Mark Mitchell and Ms. Sharon Knowles
The Christine and Rob Johnson Family Fund	Mr. and Mrs. David V. Larson	Anuj Maniar	Mobile International Festival
† Ms. Laura Macker Johnston	† Eleanor Larson	† Mr. and Mrs. Donald Mankoff	Nancy Molter
James Joly	Charles Lat	Mr. Loring Manley	Ms. Joanne Monaco
Mr. William K. Jones	Sir Richard and Lady Latham	Satya P. Mantha	Kimberley Monasterio
Jeffrey Jones	Jeremy Lathen	† Mr. David Marcellas	† Ms. Julie Moody and Ms. Paula Schroeder
Mr. Ajoe Joseph	Mr. John Laudo	Markel Corporation	The Moody's Foundation
Mr. and Mrs. Thomas Jost	Laufer Group International	Constance Marks	Mr. John Moore
JSRM Foundation	Brian Lawler	† Ms. Jennifer Marler	William Morey
Kit Junya	Tim Lay	Ms. Nohl Martin and Mr. Stephen Vella	Magnus Morgan
Jenya Kahn-Lang	Christopher Layton	Mr. and Mrs. Pedro Martinez	Danielle Morgan
† Mr. Jon Kalbfeisch	Mr. David W. Lea and Ms. Staci M. Richards	† Mr. and Mrs. Angel Martinez	Mr. and Mrs. Steven G. Morgan
	Mr. and Mrs. Peter Leahy	Martinez Family Charitable Fund	Mr. and Mrs. Garth R. Morgan
		Phyllis Masri	Yuri Moribe
		† Dr. Tove L. Matas	Ms. Rebecca J. Morr
		Ms. Linda Mathews	Jonathan Morris

† indicates donors who have given for 5 or more consecutive years

* indicates former board members

Bronwen Morris
Helga Angenendt Morris
Mr. and Mrs. Mark A. Moseley
Jerome Mourits
Satish Movva
Ms. Julina Moy
David Moyer
Evelyn Mui
‡ Mr. John Mulder
Mrs. Darlene M. Mullick
‡ Mr. and Mrs. Raymond E. Munana
Herbert Munt
‡ Mr. and Mrs. John F. Murphy
Robert Murray
Mr. and Mrs. Andrew Murray
Barbara Myers
‡ Mr. and Mrs. Kevin Myers
Andrew Myrick
Mr. and Mrs. Jack Nadel
The Nadel Foundation
Pierre Nader, M.D. and Mrs. Maya Nader
Diann Nagami
John Nangle
John Naradzay
Dr. Padma Kumar Narayanan
Colin Nash
National Christian Foundation - Seattle
National Instruments
National Student Clearinghouse
Mr. Antonio Navarro
Nash Naviwala
Mr. and Mrs. Paul D. Nay
Mr. and Mrs. Riley Neel
Mr. and Mrs. Randy E. Nees
Ms. Dianne G. Nelson
Mr. and Mrs. J. William Nelson
‡ Mrs. Marjorie Nelson
Walter Netherland
Mary Nettleman
‡ The New York Community Trust
Ms. Linda Newman
Ms. Elizabeth Newman-Smith
Bosco Ng
Nancy Nguyen
Betty Nguyen
Trung Nguyen
Trong Nguyen
‡ Mr. and Mrs. Phuong L. Nguyen
Ms. Sinead Ni Ghabhlain and Mr. Mick Barrett
Philip Nickels
Dave Niehaus
Kay Nielsen
‡ Mrs. Phyllis M. Nielsen
‡ Mr. and Mrs. Roger A. Nielsen
Nightingale Homecare
Niles Township High School
Mr. Joseph A. Nitiss and Ms. Karen A. Carruthers
Ms. Kandy Noel
Noramco Inc.
‡ Ms. Mary Ann Norbom
Joy and Dan Norem
Mr. and Mrs. Jack Norqual
Novacap
Dr. Kathryn H. Obear
Mr. and Mrs. Michael J. O'Brien
Kerry O'Brien
Carolyn O'Connor
Lauren O'Donohue
‡ Mr. Donald D. O'Dowd
Bettina O'Kulich
Jonathan Oliveira
Mr. Craig Olroyd
Mr. Donald C. Olson
Lisa O'Neill
James Ontiveros
Mr. Wesley Openshaw and Mrs. Loisann Openshaw
‡ The Orfalea Foundation
Ely Orias
Barry Osborn
‡ Mr. and Mrs. John Osborn
‡ Mr. Edward L. Ostlick
Brenda Osterhaug
Katherine Ostrom
George Oswald
Carl Owenby

Laurie Owens
The Pacificaires
Charles Paget
Santosh Pappachan
Edward Pappas
‡ Dr. Jason Parham
Mr. and Mrs. Richard F. Parris
Roy Park
Ms. Laura Parsons
Deepa Patel
Ajay Patel
Neer Patel
Hemant Patel
Anish Patel
Mr. and Mrs. Ronald J. Patten
‡ Karin Patterson
Mr. James L. Patton
Peggy and Robert Paul
Mayumi Pawel
Rebecca Payawal
Mr. and Mrs. John Payne Miller
PBC Pepsi Beverages Company
Matthew Peabody
Sherry Pearlstein
Juliana Peck
Shannon Pedersen
‡ Ms. Constance Penley
Betsy Pennington
‡ Mr. and Mrs. Daniel Perman
Peggy L. Perry
Mary Lynn Perry
Mr. Trent Pershall
Pete Wallace Rigging & Machinery Moving
Mr. and Mrs. David L. Peters
Mr. Holger Peters
Anna Thaler Petersen
Ms. Marcella M. Peterson
Clifton Peterson
Margaret Petrick
Mr. and Mrs. Erle Pettus III
James Petzel
‡ Mr. and Mrs. John J. Peyton
Martin Pflieger
Kathryn Phelan
James Phillips
Mr. Bradley Phillips
Mr. Ray Pili
Mr. Joseph Pinkava and Mr. Manuel Barretto
Adrian Pirvu
John Piskora
Karen Plowe
Ms. Caitlin Plunkett
Mr. and Mrs. Syamal Poddar
Mr. John Poitras
Joseph Poletti
Allison Polin
Brian Poll
Mr. and Mrs. Howard A. Pollak
Mr. Mark E. Pollock
Mr. James Pollock
Ramakrishna Polu
‡ Ms. Bonnie K. Portley
Mr. Jerry Porzernsky
Arnold Potosky
Mr. and Mrs. C. Wesley Poulson
Jo Anne Powell-Coffman
Sunitha Prasannakumar
‡ Dr. Jayne M. Prats and Mr. Ricart Prats
Peter Preis
Pamela Prellwitz
Presbyterian Church of Los Alamos
Presbyterian Women in the Presbytery of Santa Barbara
Julia Prescott
PriceWaterhouseCoopers LLP
‡ Mr. Eric Prieto
John Primiani
Mr. and Mrs. Paul G. Prince
Craig Purdy
‡ Mr. and Mrs. Thomas Purl
Pzena Investment Charitable Fund
Ms. Isabeall Quella
‡ Brooke Quinlan
R. H. Keleher Co. Inc.
Ms. Angela Rabkin
Joseph Rafaniello
Mr. and Mrs. Shad Rahman

Seth Ramesh
Mrs. Alpana Ranade
Mr. and Mrs. Michael B. Randolph
Mr. Charles Rashall
Norman Ray
Mr. James Read
Fran Recht
Helen Recinos
Jean Reed
Laura Reed
Gregory Reese
Dr. Benjamin Reese
Barton Reese
B. Regal
‡ Mrs. Jean M. Reiche
Ronald Reif
Robert Reily
Caitlin Reisel
Adam J. Relis
Mr. and Mrs. Nicholas B. Remmes
Retail Detail Merchandising Inc.
J. C. Reveling
Ivy Reyes
John Rhee
Mr. Edgar B. Rhodes and Ms. Joan Pascal
Mr. and Mrs. Robert Richman
Rienzi & Rienze Communications
Michael Rieser
John Riggs
‡ Ms. Patricia J. Riley
‡ Mr. James Riso
Jan-John Rivera
Isabel Rivera
Erica Rivinoja
Mrs. Gail Robbins
Mr. and Mrs. James B. Robertson
Dana Robinson
Helen Robinson
Ms. Ann T. Robison
Rockefeller Foundation
Mr. David J. Rockey
Mr. Adam Rodriguez
Mr. Francisco Rodriguez
Julio Rodriguez Ramos
Mr. and Mrs. Mark J. Rodwell
Ms. Karen L. Rogers
‡ Ms. Ciara Rogers
Ms. Karen Rohrbacher
RollGiving
Mr. and Mrs. Robert J. Rosati
David Roseberry
‡ Margot Roseman, M.D.
Gary Rosen
Robert Rosen
‡ Maralyn Rosenblatt
Philip Rosenthal
‡ Mr. Gordon Rothrock
Richard Rowe
Patricia Rowen
‡ Mr. and Mrs. George Rowley
Mr. Lane Rubin
Leila Rubin
Mr. Samuel J. Rudin
‡ Ms. Phyllis E. Ruiz
Carole Rush
Mr. and Mrs. George Rusznak
Tim Rutland
‡ RVJ Associates
Matthew Ryan
Ms. Frances V. Ryan
‡ Mr. Alfred W. Rymills
Mr. Brian Saam
Jeffrey Saavedra
Ken Sakurai
Virginia Saldajeno
Carlos Saldanha
Ms. Patricia D. Saleh
Samarkand of Santa Barbara Inc.
James Sample
Kenneth Sandbank
Santa Barbara - Toba Sister Cities Committee
Santa Barbara Community Academy
Bernardo Santamaria
Susana Sarangaya
Ms. Mary Sarwary
Bonnie Sassman
Mr. and Mrs. Garret Savage

Ms. Carol Sawyer and Mr. Robert Torian
Mr. Edward Saxton
Mr. and Mrs. Jim E. Scarborough
Benjamin Schachter
Ms. Jessica Schaeman
Mr. Frank Schipper and Ms. Leslie H. Meadowcroft
Max Schleicher
Ms. Judy C. Schmarje
Mr. Eric Schmidt
Ms. Lauren E. Schmidt
‡ Mr. and Mrs. Thomas Schmidt
Joseph Schmitz
M. D. Schochet
Anna Schocket
‡ Dr. and Mrs. Henry B. Schoenberger
Norman Schriever
‡ Mr. Daniel R. Schroeder
Mr. T. Paul Schultz
Leonard Schultz
Mr. David Schultz
Mr. Jerome M. Schwartzbaum
‡ Mr. Stephen G. Schwarz
Cathy Schwemm
Kristen Scotchmer
Katherine Scott
Jill Baran Scott
Mary-Louise Scully, M.D. and Ralph Zitnik, M.D.
Sealane Marketing Inc.
Shawn Seale
Mr. and Mrs. Peter Seaman
Michael Sears
Elizabeth Seetho
Edward Segel
‡ Mrs. Gerda Sekban
Theresa Selfa
Richard Senelly
Elizabeth Senner
Peter Serchuk
Ms. Lynne Taus Sergi
Ms. Adriana Seto
Thomas Setzer
Mr. and Mrs. Michael Sexton
Chris Shabsin
Vinesh Shah
William A. Shaner III, D.D.S. and Mrs. Sherrie D. Shaner
Gerald Shapiro
Mahesh Sharma
Mr. and Mrs. Thom J. Sharp
Ms. Karen Shaw and Mr. Larry Hohm
Allan Shedlo
Nancy Sheffield
Mr. Jeffrey Sherman
Mr. Alistair Sherret
Mary Sherwin
‡ Mr. Harvey Shew
Joanne Shimada
Jennifer Shimada
‡ Mr. and Mrs. Steve C. Shinn
Yu Shirai
Shomos Family Foundation
Jorge Shopis
‡ Mr. Lee Shough
Mr. Gordon Shriver
Mr. and Mrs. Sam W. Shrout
Ms. Ellen Shultz
Jacqueline Siben
Dana Sickler
Mr. James Sie
Mr. and Mrs. Mark Siess
Ms. Katherine A. Siggerud
‡ Mr. and Mrs. Clark R. Silcox
Silver Lake Technology Management, LLC
Sam Silverstein
Melanie Simon
Mr. Jeffrey Simons
Simons Foundation
Mr. and Mrs. Kurt Simpson
‡ Lenin Singaravelu
Ms. Preeti Singhnarula
Chris Sinton
Dr. Todd Sirota
‡ Mr. Arthur N. Sklaroff
Richard Slivoskey
Mrs. Abby Smith
J. David Smith

Joan Allen Smith	Mark G. Hauser	Mr. and Mrs. Paul F. Walter	‡ Ms. Gail Yanowitch	Shire
Ms. Delia Smith	Nurhan Torun	Lisa Wang	Stephanie Yao	Smile Train
Mr. and Mrs. Hugh S. Smith	Joshua Trammell	Sharon Waranius	Mr. and Mrs. David Yates	Soap Guy
Ms. Allyson Smith	Mr. Hung Tran	Paul Warner	Mrs. Andrea Yee	Sunrise Pharmaceutical, Inc.
‡ Ms. Katherine A. Smith	Transfirst LLC	‡ Mr. and Mrs. Burry Warner	Mr. and Mrs. Edward Yoon	Takeda Pharmaceuticals USA, Inc.
Lucia Snowhill	Laura Travis-Deprest	Mr. Jason Waskey	Youth & Family Services	Teva Pharmaceuticals
Lance Snyder	Ms. Wendy S. Travolta	Dr. Haimanot Wasse	Frank Yu	The Clorox Company
Ms. Shirley Soares	Jimmy Trevino	Max Watson	‡ Mr. and Mrs. Gregory P. Yvarra	Trigen Laboratories
Mary Sobon	Breanna Trexler	Leland Watson	Mr. Zeev Zalk	Tulipe
‡ Mr. Robert A. Sorich	‡ Triangle Community	Mr. Duncan Watts	‡ Ms. Allison Zelik	UG Healthcare
The Spahr Foundation	Foundation, Inc.	WealthEngine Inc.	Zhi-Da Zhong	Ventura Global Health Project
‡ Mr. Ian Spatz	Angela Trinidad	Rodney C. Webb	Xuewu Zhu	Virtus Pharmaceuticals
Spielman Family Foundation	Lisa Triplett	Mr. Timothy Weber	Sue Zipkin	
Lev Spiro	Ms. Linda Tripoli and Mr. Scott	Mr. and Mrs. Edward Webster	Ms. Seyburn Zorthian and Mr.	
Charles Springer	Miller	Ms. April Weeks	Mark McGinnis	
Sondra Stallard	John Triscari	‡ Mr. Jonathan Weg		
Ms. Kristi Stanfill	Mr. Amit Trivedi	Ms. Christina Wei		
F. Stanger	Udo Trost	Peggy and Mike Weimar		
Nancy Stanley	John Truitt	Mr. and Mrs. Michael B.		
Mr. Scott Stanton	Thao Truong	Weimer		
Staritch Foundation	Mr. Timothy Tsai	William Weingarten		
Susan Starkweather	‡ Mr. James Tucker	Susan Welch		
‡ Mr. and Mrs. Joseph Stastny	Ms. Heather Tuininga	‡ Wells Fargo Community		
State Street Foundation	Janet Tung	Support Campaign		
Mrs. Nancy States	Matthew Turk	Paul Wenz		
Jerre Stead	Timothy Turnbull	‡ Mr. and Mrs. William H. Werts		
Brendan Steer	Miss Monica Turner	Mr. Keith Westcott		
Dr. Andrew Steffl	Ms. Janice Turner	‡ Mr. Arthur H. Westerfield		
Mr. Robert Stein	Mrs. Evan S. Turpin	Diane and Lewis Wetzel		
Joseph Stella	Katren Tyler	Julie Wexler		
Ms. Betty J. Stephens	‡ Mr. Peter Ullmann and Ms. Vicki	Wheaton Franciscan Sisters		
Mr. Gregory Stern	Harrison	Corp.		
Rebecca Lynn Sterud	United Way California Capital	Mr. Kevin Whelan		
‡ Mrs. Louise Stettinius	Region	Dr. A. C. Whelen		
Mr. Ronald Stitch	‡ United Way of Santa Barbara	Mr. Stephen Whipple		
‡ Mr. and Mrs. Michael Stohl	County	Mr. and Mrs. William White		
Larry Stone	Mr. Fernando L. Uribe	Gary Whitlock		
Jeff Straub	‡ Ms. Janet Urbe	Mr. and Mrs. Steve E.		
Linda and Steve Strauchler	Utility Systems Solutions, Inc.	Widergren		
Philip Strauss	Ms. Anna Uy	Dr. Robert Wiegert		
Gary Strauss	Ms. Claire Van Blaricum	Ms. Teri J. Wielenga and Mr.		
‡ Mr. Giles M. Strekel	Helen Van Deren	Robert Bosenmeyer		
Stephanie and Thomas Stripe	Ms. Jennifer Van Egmond	Terry Wight		
Student Government Assoc. of	Dee Van Someren	William Wilder		
Global Underserved Medicine	‡ Mr. and Mrs. Don Van	Carol Wilke		
Peishuan Su	Valkenburg	Shirley Will		
Pichappan Subbiah	Vandenberg Middle School	Marsha Williams		
Ravi Subramanyam	‡ Mr. John Vanderford	James Williams		
Mr. Saba Sugunavel	‡ Ms. Julie Vanderwilt	Mr. and Mrs. R. David Williams		
Mr. David Suh	Mr. and Mrs. John D.	Ellen Willinger		
Mr. Glenn Suhd	Vandevelde	‡ Dr. David C. Wills		
Mr. and Mrs. William F. Sullivan	Vanguard Natural Resources,	‡ Mr. and Mrs. Hampton Wilmot		
‡ Miss Parichart Surasaksin	LLC	Mr. Winfield D. Wilson		
‡ Mr. and Mrs. Jerry Sweet	Somit Varma	Mr. Gregg Wilson and Mr. John		
Mr. and Mrs. Eric D. Swenson	Paulina Varshavskaya	Maizna		
John Szeto	Arun Vasudeva	Mr. Oliver T. Wilson and Ms.		
Nancy Szulczewski	Aarti Vaswani	Kaarina I. Tienhaara		
John Taber	Mrs. Winifred M. Vedder	Mr. Scott C. Wilson		
Ms. Linda Taber	Mr. and Mrs. Vasan	Robin and Peter Winokur		
Sylvio Tabet	Venkataraman	Gregory Winter		
‡ Mr. Cy Tamanaha	Ventura County Community	‡ Mr. and Mrs. Douglas R. Winter		
Margaret Tanaka	College District	Ed Winter-Tamkin		
Bill Tannenbaum	Vincent Verga	Ashley Winton		
Mr. John Taylor	‡ Verizon Foundation	Mr. and Mrs. William S. Wise		
Charles Teague	Ms. Annabelle Villalobos	‡ Lauren Wisely		
Daniel Teff	Regina and Rafael Villasmil	Ms. Carol Wolchok		
Pamela Tellez	David Vincent	Mrs. Lori A. Wolff-Brucker		
William Templeton	VMWare Foundation	Ana Wolfington		
Michael Terry	Ms. Sheri J. Vogan	Dan Woltz		
Mr. and Mrs. Mick Thomas	Ms. Loreen Volpe and Mr.	Roger Karen Wong-Duncan		
James Thompson	William S. Skinner	Roger Woo		
Michael Thompson	Mr. and Mrs. Hubert D. Vos /	‡ Mrs. Nadia Wood		
Mr. Blaise Thompson	Vos Family Foundation	‡ Mr. Bruce Woodruff		
Ms. Patricia Thomson	Joshua Votaw	Mr. Edwin N. Woods, Jr.		
Clifford Thorne	Mr. and Mrs. John Vowels	Ms. Caroline J. Woods		
Mr. Vijayan Thottuvellil	Kyle Vucko	Woodstock Corporation		
Tierra Adorada Dist. No. 14	Sean Wachob	Mr. and Mrs. James Wooster		
Mr. McLane Tilton	Ms. Barbara E. Wagner and Mr.	Workman Publishing Company		
Time Inc. Time to Give Back	Martin G. Scharlemann	Worldwide ERC		
Campaign	Mr. Michael Waldman and Ms.	Teresa Wright		
‡ Ms. Cecilia Ann Tobin	Linda Coe	Randy Wright		
Parin Tolia	Ole Waldmann	Mr. and Mrs. C. E. Wullbrandt		
Cynthia Tong	Mr. and Mrs. George W. Walker	‡ Ms. Michelle Wyatt		
Scott Tooter	Mr. Michael Walker	‡ Dr. and Mrs. David Wyatt		
‡ Dr. Elizabeth A. Toro and Mr.	Fiona Walsh	Ms. Jane Q. Xia		
		Scott Yacyszyn		
		Mrs. Wendy Yager		
		Sherry Yamamoto		

‡ indicates donors who have given for 5 or more consecutive years

* indicates former board members

MANUFACTURERS + DISTRIBUTORS PROVIDING MEDICAL DONATIONS

3M	Alexia Arguello
Abbott	ArtfulBits CZ s.r.o.
Abbott International	Brownstein Hyatt Farber Schreck,
AbbVie	LLP
Actavis Pharma, Inc.	Mr. Gary Brusse
Alcon Laboratories, Inc.	David Buchanan
Allergan, Inc.	Cancer Center of Santa Barbara
Amneal Pharmaceuticals	Cedars-Sinai Medical Center
Ansell Healthcare	Richard Closson
AstraZeneca	Equipped2Heal
Basic Medical	Every Child's Dream Foundation
Baxter International Inc.	FedEx
BD	Fifteen Minutes Inc.
Bluebonnet Nutrition Corporation	Friendship House
Boehringer Ingelheim Cares	Gazebo Mauna Loa, Inc.
Bristol-Myers Squibb	General Dentistry for Children &
C.R. Bard Medical Division	Teenagers
Calmoseptine, Inc.	GlaxoSmithKline Foundation
Cardinal Health, Inc.	Robert & Alice Glenn
Cera Products, Inc.	Globus Relief Fund
Chattem Inc.	Mr. and Mrs. Richard Godfrey
Clif Bar & Company	Google
Covidien	Dr. and Mrs. Leonard S.
Crosstex International	Grabowski
CVS Corporation - Corporate HQ	Howard Gross
Drip Drop, Inc.	Northrop Grumman
Eli Lilly & Company	Hawthorn Surgery Center
Ethicon, Inc.	Holland Foundation
Genentech, Inc.	D. Hope
Genzyme Corporation	Hospitals for Hope
GF Health Products, Inc.	The Information Blanket
GSK	International Health Partners
GSMS Incorporated	JNL Glass
Handpiece Trading / Maramar	Konbit Sante Cap-Haitien
Dental	La Tavola
Hanover Environmental Services	Debbie Matityahu
Inc	Matt Walla Productions
Henry Schein, Inc.	Mike McCullough
Hospira, Inc.	Meal Kit Supply America LLC
Integra LifeSciences Sales LLC	Moss-Adams LLP
Janssen Pharmaceuticals	Mr. and Mrs. Steve Moya
Johnson & Johnson	Palantir Technologies
Johnson & Johnson Consumer	PeaceHealth
Companies	PR Newswire Association, LLC
Kimberly-Clark	Richard Priestaf
LifeScan, Inc.	Mr. and Mrs. Jonathan T. Raith
Life Uniform Company	Reicker, Pfau, Pyle & McRoy LLP
McKesson Medical-Surgical	Sansum Clinic
Meda Pharmaceuticals	Santa Barbara Neighborhood
Medvantx Incorporated	Clinics
Merck & Co., Inc.	County of Santa Barbara Public
Microflex	Health
Midmark Corporation	Signature Parking Service, LLC
Mylan Laboratories Inc.	Simpler Systems
Nephron Pharmaceuticals	Skyline Exhibits West
Neurogena Corporation	Mr. Al Sladek
Novartis Corporation	Mr. Geoff Slaff
Omron Healthcare, Inc.	Rebecca Stein-Wexler
Orthopaedic Resources, Inc.	TENABLE Network Security, Inc.
Pfizer, Inc.	UCP Wheels for Humanity
Prestige Brands	Unite to Light, Inc.
Recordati Rare Diseases, Inc.	Visiting Nurse & Hospice Care
REM Eyewear	Vitamin Angels
Roche Diagnostics	ZGAL Shipping
SAM Medical Products	
sanofi pasteur	
Sanofi US Foundation for North	
America	
Sappo Hill Soapworks	
Sempermed USA	

LEGACY SOCIETY MEMBERS

The Legacy Society exclusively recognizes those caring individuals who have included Direct Relief in their estate plans. Their commitment and dedication are shining examples of generosity that will help Direct Relief continue its efforts to improve the health and lives of people affected by poverty or emergency situations by mobilizing and providing essential medical resources needed for their care.

Dotsy and Jack* Adams
 Peter and Rebecca Adams
 Jane H. Alexander Trust
 Anner Trust
 The Romuald Anthony and Barbara
 R. Anthony Revocable Trust
 Estate of Rhea Applewhite
 Dr. and Mrs. Gilbert L. Ashor
 Miriam and William* Bailey
 Estate of Charles H. Bell
 Elizabeth Bertuccelli Family Trust
 Merle E. Betz, Jr.
 Estate of D. Craig Bigelow
 Mr. Joseph F. Bleckel
 Ms. Jayne Brechwald and Mr. Gary
 Elkins
 Mrs. Helen J. Brown
 Estate of Marguerite Bulf
 Don Bullick
 William S. Burtness
 Andrew and Elizabeth Butcher
 Ms. Carol Carson
 Estate of Charlotte Castalde
 Estate of June M. Celmayer
 Estate of Richard Certo
 The Crosby Fund
 Marjorie B. Cullman Trust
 Roy R. and Laurie M. Cummins
 Fund of The Oregon Community
 Foundation
 Estate of Margaret E. Davis
 Estate of Peter M. Dearden
 Estate of H. Guy Di Stefano
 Grant C. Ehrlich Trust
 Mr. and Mrs. Edward G. Ewing
 Estate of Elsie Feibes
 Estate of Florence Feiler
 Dr. Julie Feinsilver
 Estate of Howard C. Fenton
 Peggy and Gary Finefrock

Estate of June Breton Fisher
 Mr. and Mrs. Gregg L. Foster
 Estate of Mario J. Frosali
 Mildred K. Fusco Trust
 Estate of Hannah Monica Gallagher
 Sandra K. Garcia
 Ms. Pearl Garcia-Baker
 Estate of June Gaudy
 Gildeson Family Trust
 Kate and Dick Godfrey
 Ed and Mary Harvey Trust
 Mrs. Raye Haskell
 Betty and Stan Hatch
 Estate of Dorothy S. Hitchcock
 Estate of Sibyl Wilma Holder
 Terrence Joseph Hughes
 Estate of Dorothy Humiston
 Estate of Wendell Ing
 Ellen and Peter Johnson
 Pat and Dick Johnson
 Ms. Beverly A. Jones
 Estate of Judith Jones
 Mr. and Mrs. Herbert Kendall
 The Estate of Dale E. Kern
 Dr. Laurence P. Kerrigan
 Mrs. Marvel Kirby
 John and Sandy Knox-Johnston
 John Michael Koelsch
 Mr. James Kohn
 The Anette La Hough Trust
 Dorothy Largay and Wayne Rosing
 Estate of the Lensch Family
 Kenneth R. Loh
 Estate of Barbara Jeanne Lotz
 Lawrence Lu
 Estate of Yvonne C. Lucassen
 Evelyn C. Lund Charitable
 Remainder Trust
 Mr. John A. Magnuson* and Mrs.
 Dorothy MacCulloch

Estate of Mary C. MacEwan
 Estate of Robert Maclean
 Marilyn and Frank* Magid
 Estate of Glenda Martin
 Audrey E. Martinson
 Martone Family Trust
 Kathleen and Bruce McBroom
 Ms. Estelle Meadoff
 Mr. Michael Mendelson
 Mr. and Mrs. Frank B. Miles
 Patricia McNulty Mitchell
 Charles J. and Esther R. Mlynek
 Trust
 Estate of Velma Morrell
 Helga Angenendt Morris
 Estate of Regis J. Morris
 Rita Moya
 Estate of Dorothy and Graham
 Nash
 Mr. Michael P. O'Neill and Mrs.
 Sarah M. O'Neill*
 Estate of James Orr
 Estate of Harold A. Parma
 Estate of William J. Partridge
 Jody and Don Petersen
 Martin and Lillian Platsko Trust
 Mark and Josephine Polakoff
 Alan R. Porter
 Mr. Juan Posada
 Estate of Nancy Roberts
 Estate of Paul N. Roberts
 Regina and Rick Roney
 Estate of Maria Rosmann
 The Babette L. Roth Irrevocable
 Trust

Natalie and Matthew Rowe
 Mr. and Mrs. Ernest J. Salomon
 Maryan and Richard Schall
 The Petar Schepanovich* and
 Kathleen Schepanovich Trust
 Nancy and Bill* Schlosser
 Estate of June H. Schuerch
 Harold and Carol Shrout
 Sledge Family Trust
 Connie Smith Nevins
 Estate of Margaret H. Smith
 Estate of Thelma R. Smith
 Estate of Robert H. Sommer
 Estate of Charles H. Sparkes
 Estate of Mary Joan Staves
 Estate of K. Walter Stawicki
 Estate of Elaine F. Stepanek
 Walter and Mae Stern Trust
 The Anna Stuurmans Revocable
 Trust
 Estate of Wilbur H. Thies, Sr. and
 Emily P. Thies
 Estate of Elna Theusen
 Estate of Grace A. Tickner
 Tilton Family Foundation
 Donn V. Tognazzini
 Carol Van den Assem Trust
 Estate of Marie L. Van Schie
 Bettine* and Lawrence Wallin
 Mr. Dana White
 Simone G. Woodcock
 Estate of Lillian Wurzel
 Linda Seltzer Yawitz
 Marjorie Lynn Zinner
 *deceased

➤➤ **FOR MORE** information on planned giving or on becoming a member of the Legacy Society, please contact: **Millie Barrett** | MBarrett@directrelief.org | (805) 879-4984 or visit us online at DirectRelief.org/LegacySociety

PRINCIPLES

- ▶ **Serve People.**
Improve the health of people living in high-need areas by strengthening fragile health systems and increasing access to quality health care.

- ▶ **Lift from the Bottom, Pull from the Top.**
Focus on serving the most medically underserved communities in the U.S. and abroad, working with the world's leading companies, greatest thinkers, and best institutions.

- ▶ **Build Upon What Exists.**
Identify, qualify, and support existing healthcare providers over the long term and serve as a catalyst for other resources.

- ▶ **Remove Barriers.**
Create transparent, reliable, and cost-effective channels to enable medically underserved communities access to essential medical resources (particularly medicines, supplies, and equipment).

- ▶ **Play to Strengths. Partner for Other Needs.**
Engage in activities that address a compelling need and align with our core competencies and areas of excellence. Ally with an expanded network of strategic partners who are working on related causes and complementary interventions in order to leverage resources.

- ▶ **Ensure Value for Money.**
Generate efficiencies, leverage resources, and maximize health improvement for people with every dollar spent. Maintain modest fundraising and administrative expenses.

- ▶ **Be a Good Partner and Advocate.**
Give credit where due, listen carefully, and respect those served and those contributing resources.

- ▶ **Respond Fast While Looking Ahead.**
Support the immediate needs of survivors by working with local partners best situated to assess, respond, and prepare for the long-term recovery.

- ▶ **Do Not Discriminate.**
Deliver aid without regard to race, ethnicity, political or religious affiliation, gender, sexual orientation, or ability to pay.

- ▶ **Aim High.**
Combine the best of business, technology, and public policy approaches for the benefit of people in need.

OUR MISSION

**IS TO IMPROVE THE HEALTH
AND LIVES OF PEOPLE
AFFECTED BY POVERTY OR
EMERGENCY SITUATIONS BY
MOBILIZING AND PROVIDING
ESSENTIAL MEDICAL
RESOURCES NEEDED FOR
THEIR CARE.**

